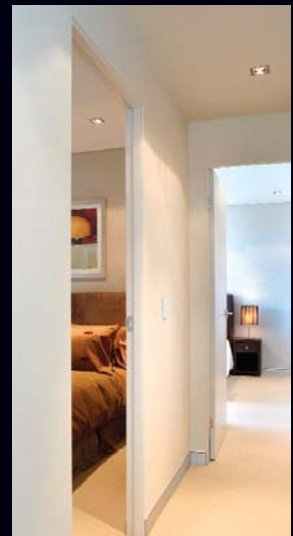


# EZYjamb®



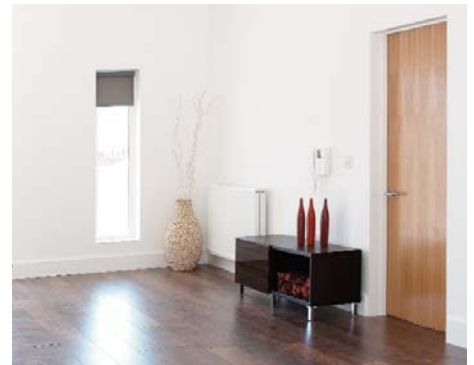
**CLEAN LINES! ...** The Flush Finish Door Jamb System



## FLUSH FINISH DOOR JAMB SYSTEM

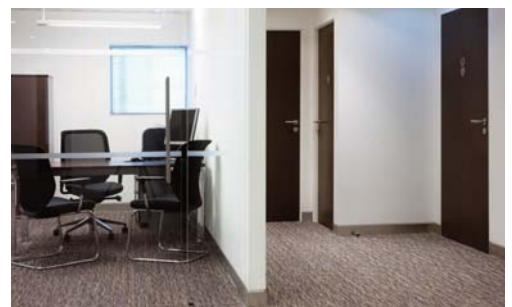
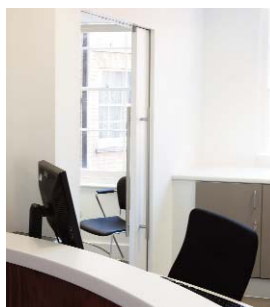
### Residential

HOMES, APARTMENTS & UNITS



### Commercial

OFFICES, SHOWROOMS & HEALTHCARE





# Clean Lines

## Ezy-Jamb...The choice for developers the world over...

For many years, architects, interior designers and developers have been trying to produce a contemporary flush finish door jamb with clean lines and inconspicuous detail. Ezy-Jamb does just that!

Ezy-Jamb is a split-type jamb manufactured from cold rolled steel with a patented profile to produce a strong and secure assembly. The jamb comes with perforated sides for flush jointing giving the doorway a clean line look.

Ezy-Jamb is simple to install, and it requires no special maintenance. The jamb is a split-type and comes in two sections that fit neatly together and provides adjustability in wall thickness. The system is complemented by a range of hardware to suit different applications.



## EZYjamb® CAVITY SLIDER SYSTEM

The full height detail is designed to allow the underside of the track to finish with the ceiling, providing a smooth continuous flow from room to room. Along with this, the **Ezy-Jamb® Flush Finish Cavity Sliding System** offers a totally square set finish around the perimeter of the frame giving a seamless transition through living areas. The Ezy-Jamb® Flush Finish Cavity Sliding System has been designed to provide the absolute minimum of detail giving the ability to completely conceal the door and give the impression that the door does not exist when open, and complete privacy when closed, adding a contemporary and architectural dimension to any project.

Triline Services supplies the Ezy-Jamb Flush Finish Cavity Sliding System with Head Jamb or Full Height Detail.

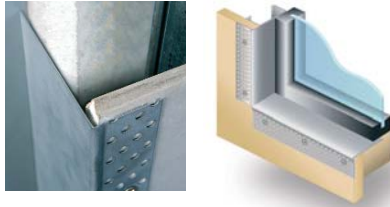




**Ezy Finishing Sections also supplied by Triline Services:**

## EZY reveal

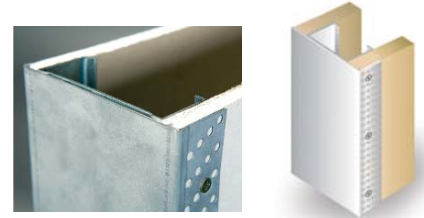
### Quick, And Economical Finishing Of Reveals



Designed for quick and economical finishing of reveals from 20-150mm. Manufactured from cold rolled steel providing a strong and secure reveal, eliminating warping, twisting, cracking and damage from UV rays.

## EZY cap

### The Strong And Versatile Alternative For Wall Ends



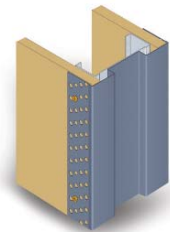
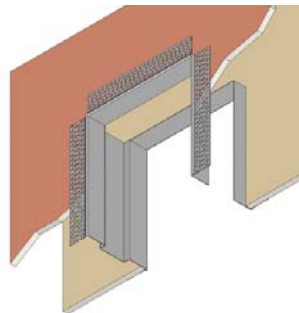
Designed for quick and economical finishing of wall ends. Manufactured from cold rolled steel providing a strong and secure wall end cap that is both durable and fast to install. Hard to reach wall ends made possible with EzyCap™. Available in a range of sizes to suit various wall configurations.

## cavkit

### Cavity Slider Kits

### The Flush Finish Cavity Slider Kit

Cavkit can be used to transform standard cavity sliders into architrave free, flush finish cavity sliders. This also complements and tones in with the Ezyjamb® flush finish door jamb system. The Cavkit is made up of Ezyreveal® and Cavkit Closer Cap® to trim and cap the plaster edges around the door penetration.

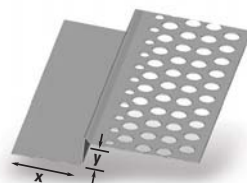


Cavkit Closer Cap can be produced to suit any specification with rebate for added privacy

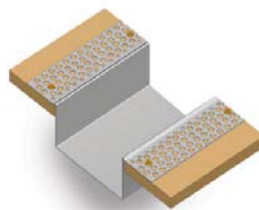
## fastcap

### Custom Finishing Sections

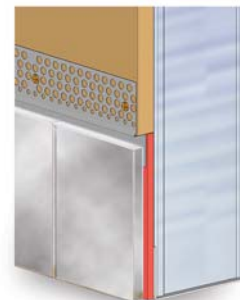
Custom finishing and capping of drywall is made easy with Fastcaps® range of custom made finishing sections. Our custom design and consultancy team is ready to help design and produce a innovative solution to your requirements for any size project. Fastcaps® custom finishing sections make the finishing of difficult drywall profiles, rebates and large oversized shadowlines a dream.



Custom Sizes Manufactured To Your Project Requirements



### Custom Rebates & Profiles Made To Suit



Custom Shadowline

**SUPPLIED BY:**

**triline**  
QUALITY DOOR SYSTEMS

**Triline Services Tasmania**  
86 Sunderland Street  
Derwent Park TAS 7009

**CONTACT US:**

Ph: 03 6272 9861  
Fax: 03 6273 5022  
Email: [sales@triline.net.au](mailto:sales@triline.net.au)  
Web: [www.triline.net.au](http://www.triline.net.au)

**CLEAN LINES! ... The Flush Finish Door Jamb System**