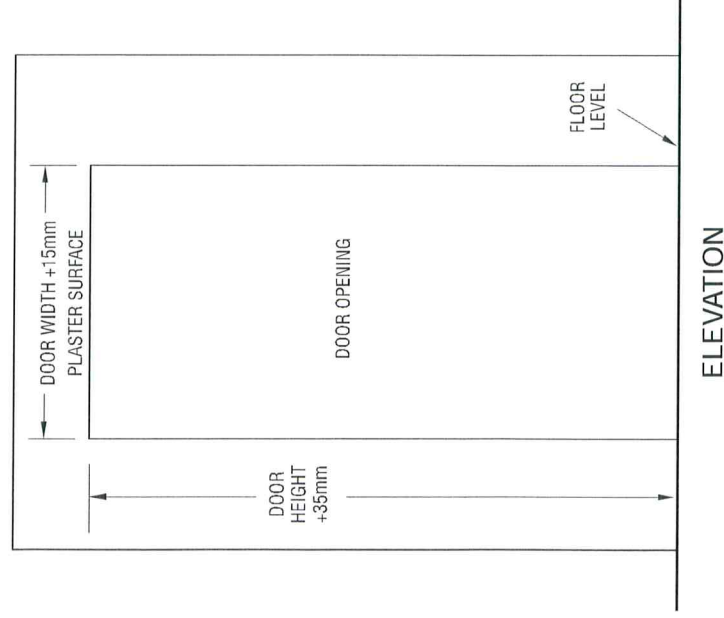


INSTALLATION INSTRUCTIONS

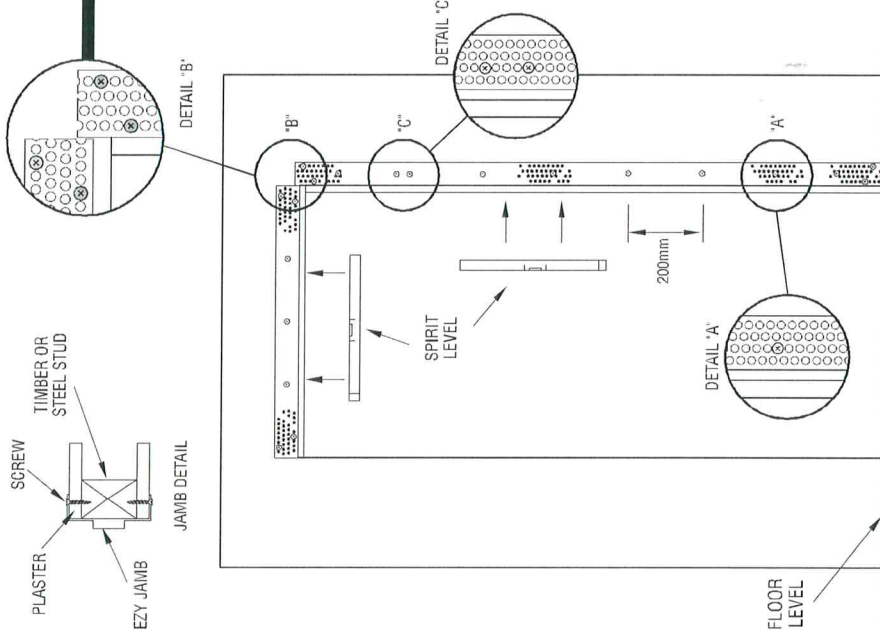
STEP 1



ENSURE THAT THE DOOR OPENING IS SQUARE AND PLUMB AND MEASURES:

- Door width + 15 mm maximum
- Door height + 35 mm (depending on floor clearance)

STEP 2



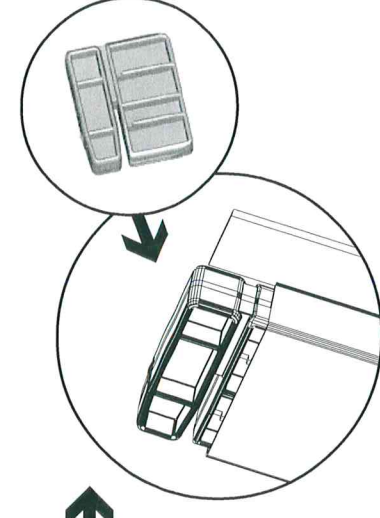
Fix hinge stile first, making sure stile is plumb and as hard against stud opening as possible.

Then screw at 200 mm centres up stile, screwing back through plaster into stud work.

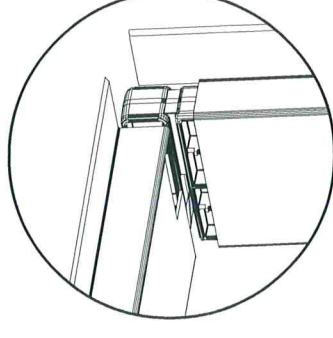
Double screw all ends as *Detail B*. and beside hinge position as *Detail C*.

STEP 2A

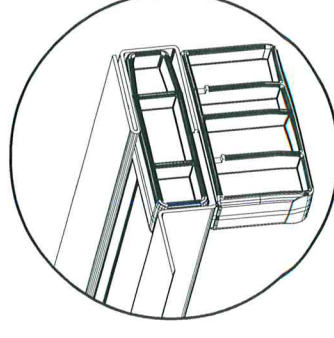
HEAD INSTALLATION INSTRUCTIONS



Head jointer as inserted in stile.

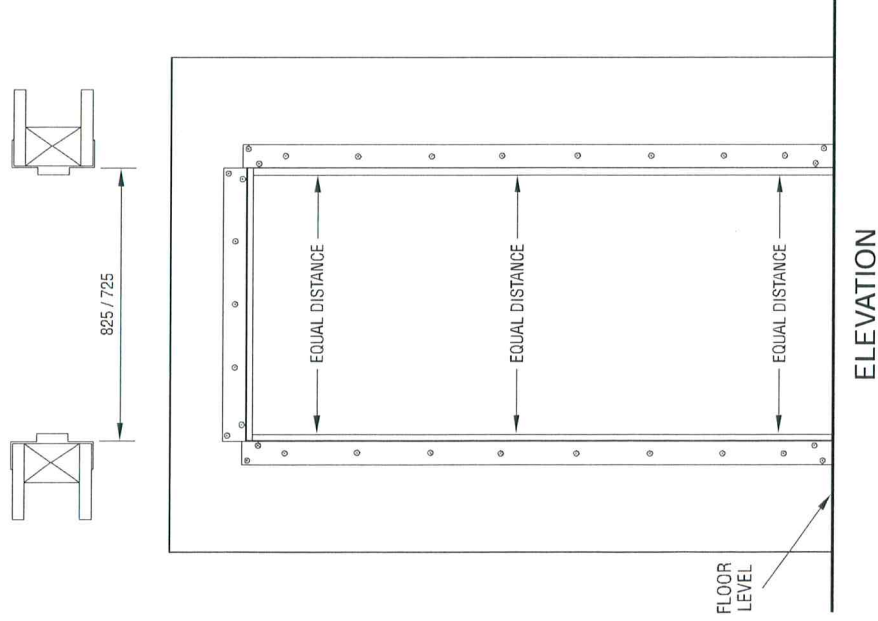


Locate head into jointer and make flush with stile so that head jointer is not seen.



Remove the remaining head jointer out of the lock stile and insert into the end of the head (as shown) to receive the lock stile.

STEP 3



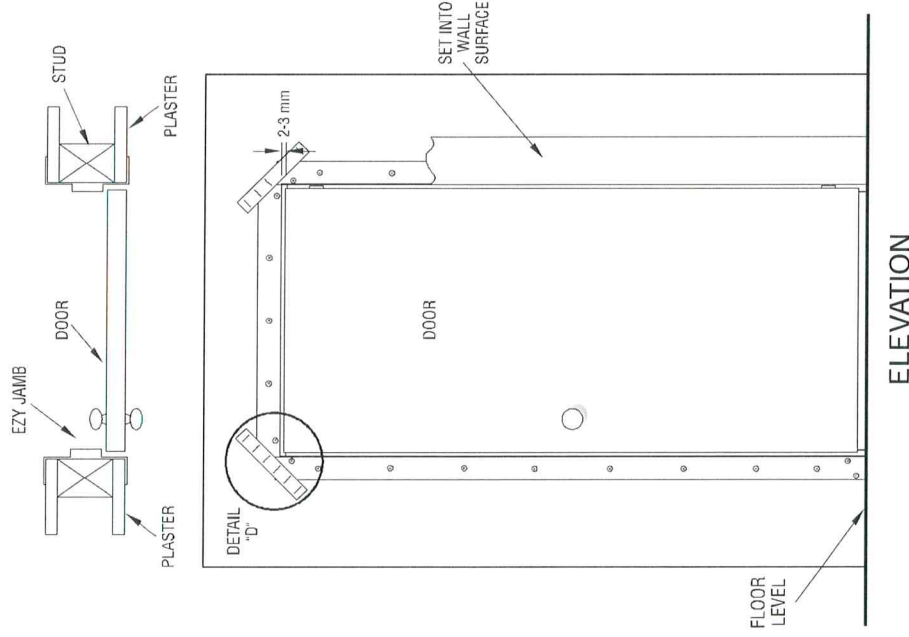
Fit the lock stile, locating stile into head jointer.

Ensure that the spacing between the two vertical sections are spaced evenly at the required distance.

820 Door : Spacing = 825 mm

720 Door : Spacing = 725 mm

STEP 4

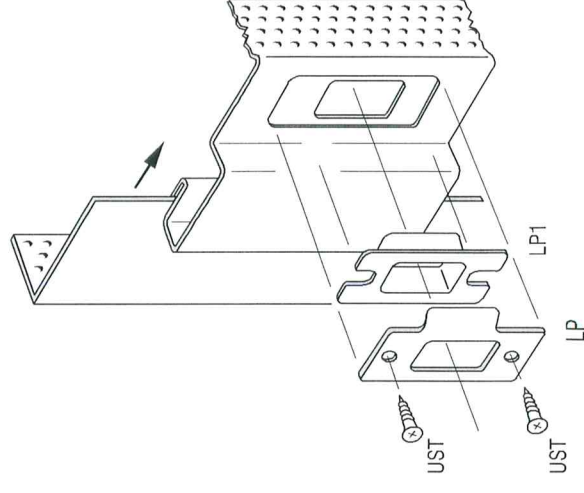
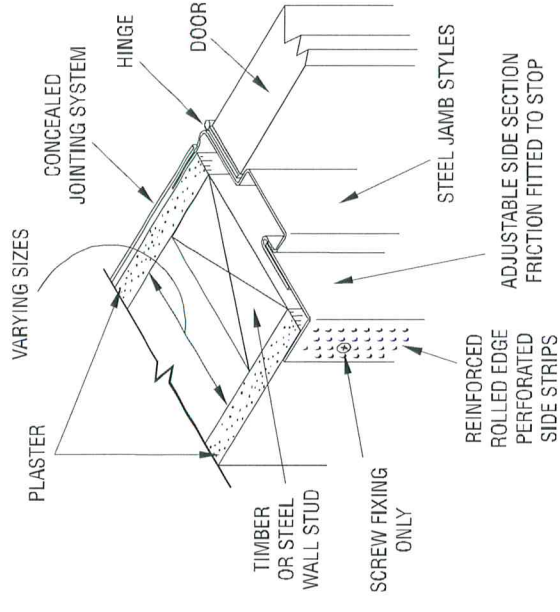


Ensure the perforated side strips sit flat against the plaster to enable the jamb sections to be easily set into the wall surface. **ALL THE CORNERS MUST BE PAPER TAPED AND SET IN AS Detail D.**

Set jamb with approved plaster compound. Hang the door in position leaving about 2 mm clearance from the top and the hinged side using the Ezy Jamb Herline Hinge.

Surface mount the striker plate into position to align with the latch plate punching.

INSTALLATION DETAIL



Information printed in this document or communicated by the designers, manufacturers, distributors or any agent is subject to change without notice to allow further development in design, manufacture and technology.