



2021

No More Pelmet - Quicker to Install - Affordable

PRO-LINE60[™] CAVITY UNIT

Triline's new cavity unit for standard sized doors with architectural Zero Clearance appearance

In Detail

With the Pro-Line60™ you can now achieve the sophisticated up market look of the Zero Clearance on your standard sized cavity units.

By making some smart design changes we can now offer you a cost effective architectural solution on your standard sized cavity units which suits "off-the-shelf" doors.

With a door weight rating of up to 60kg this new generation Zero Clearance cavity system achieves the desired clean line look on all your standard sized sliding doors. In using the Pro-Line60™ on the standard sized cavity units, this will match with full height Zero Clearance units ensuring consistency to doorways throughout the dwelling.

FEATURES



No pelmets - achieve the same minimalist, clean lined look of the Zero Clearance cavity unit



Max 60kg door weight



Affordable upgrade from the standard Phoenix unit to achieve up-market feel on standard sized sliding doors

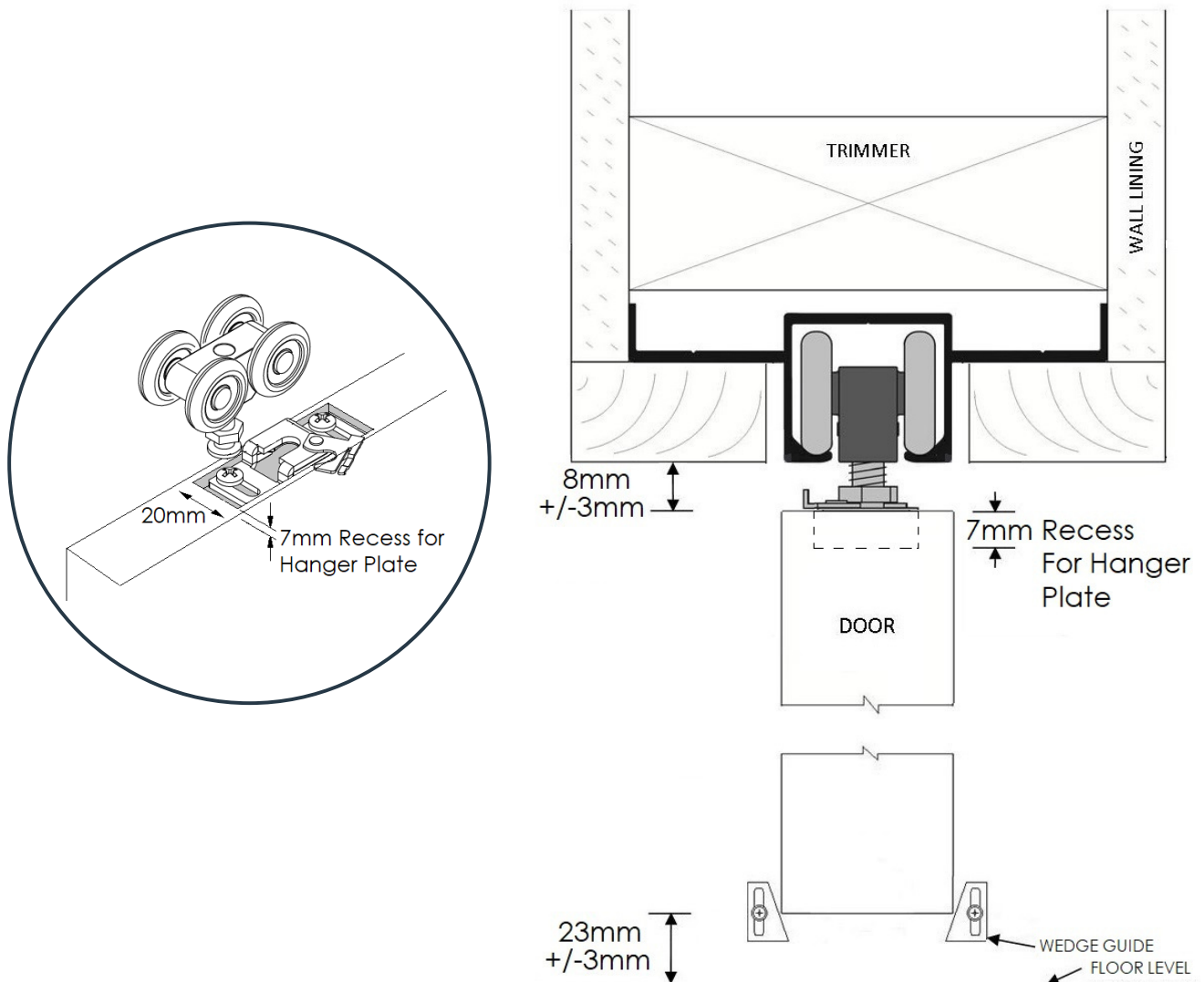


Quicker installation time



Suits off the shelf doors with no need for bigger top & bottom rails for hardware rebates

Door Clearances



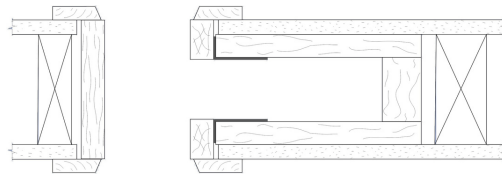
With the new hanger plate design which is recessed into the top of the door by max. 7mm, you can now achieve that sophisticated and architectural look with clearances of a minimum of 5mm (depending on the clearances required under the door) between the track and the top of the door, eliminating the need for timber pelmets.

The Pro-Line60™ cavity slider has simple height adjustment by winding the hanger bolt up or down to suit. There is no locking nut due to the design of the nylon body holding the bolt in place.

It is the builders responsibility to ensure that the clearance under the door complies with the BCA.

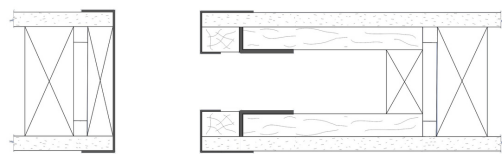
Trim Options

ARCHITRAVES



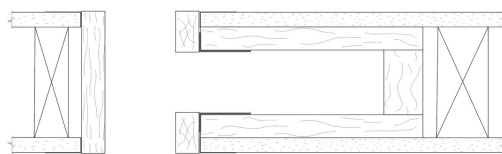
This is our standard setup for our cavity units. Split jambs, heads and closing jamb are all made to be fitted with architraves (supplied by others). Architrave height also matches standard swing door architrave height to create a seamless look when side by side.

TRILINE EZYJAMB CAVKIT



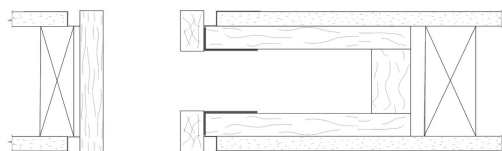
Manufactured from high-performance steel, the metal frames trim and cap the plaster edges around the door penetration. The cavity jambs are made smaller than standard for ease of wrapping over plasterboard. Triline can supply our purpose made EzyJamb flush finish system to suit your cavity slider to streamline your installation process.

P25 STOPPING ANGLE



The jambs are all made 3mm wider to sit flush with the P25 angle (supplied by others) once this has been troweled in and painted to ensure a clean square stop finish to the door jamb.

P50 SHADOW LINE



Also requires the jambs to be made slightly wider to align with the metal P50 shadow line angle (supplied by others). This unique shadow line adds another whole dimension to the aesthetics of your doorway.

Opening Preparation

Frames are designed to sit on to the floor surface (i.e. concrete/timber) before floor coverings.

Door Clearances:

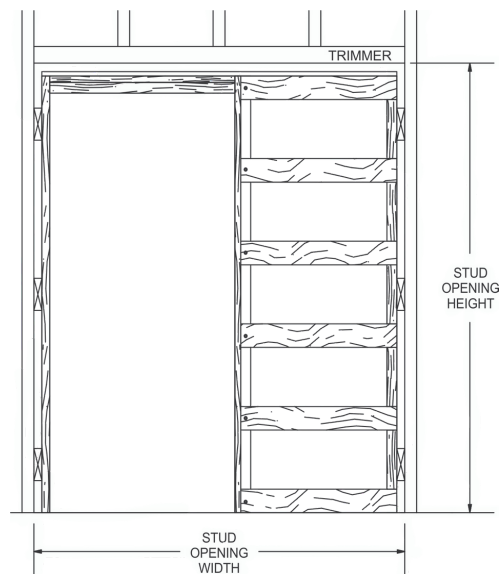
Between track & door: 8mm +/-3mm

Below door: 23mm +/-3mm

SINGLE DOOR OPENING

Opening Width (Stud to Stud): 2 x door width + 60mm

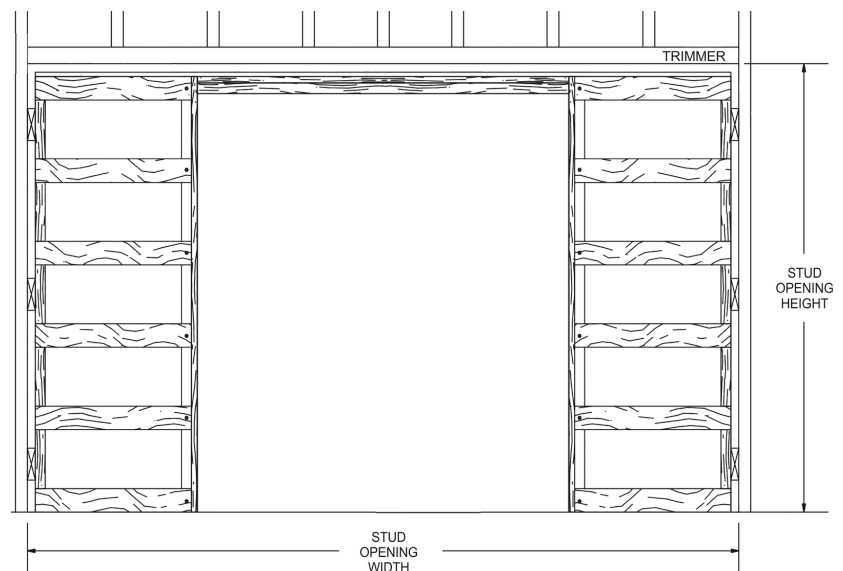
Opening Height (Floor to Trimmer): door height + 75mm



DOUBLE DOOR OPENING

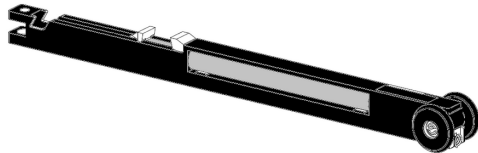
Opening Width (Stud to Stud): 4 x door width + 60mm

Opening Height (Floor to Trimmer): door height + 75mm



Accessories

SOFT CLOSER



What are the benefits?

- Soft Closing creates safer sliding doors by preventing finger jams
- Relieves pressure on closing jamb
- Adds that additional luxury to your sliding doors

POCKET DOOR RELEASE



What are the benefits?

- Push the door in and the spring mechanism pops it out so you can easily grasp the door and pull closed
- Quick & easy to install
- No more holes or small finger latches needed

Engineering & Certification

All Triline cavity sliders up to 2400 x 1200 are certified to carry floor to ceiling tiles as per the Prototype Test requirements outlined in AS 1720 Timber Structures—Design Methods.

Contact your supplier for further details on Total Equivalent Test Load and recommended installation combinations.

PEFC & Responsible Wood

Triline Quality Door Systems is a certified member of the Responsible Wood program for the Endorsement of Forest Certification Schemes.



Head Office/Factory

86 Sunderland Street
Derwent Park TAS 7009

Tel: 1300 239 206

Email: sales@triline.net.au



triline.net.au

© Triline 2021