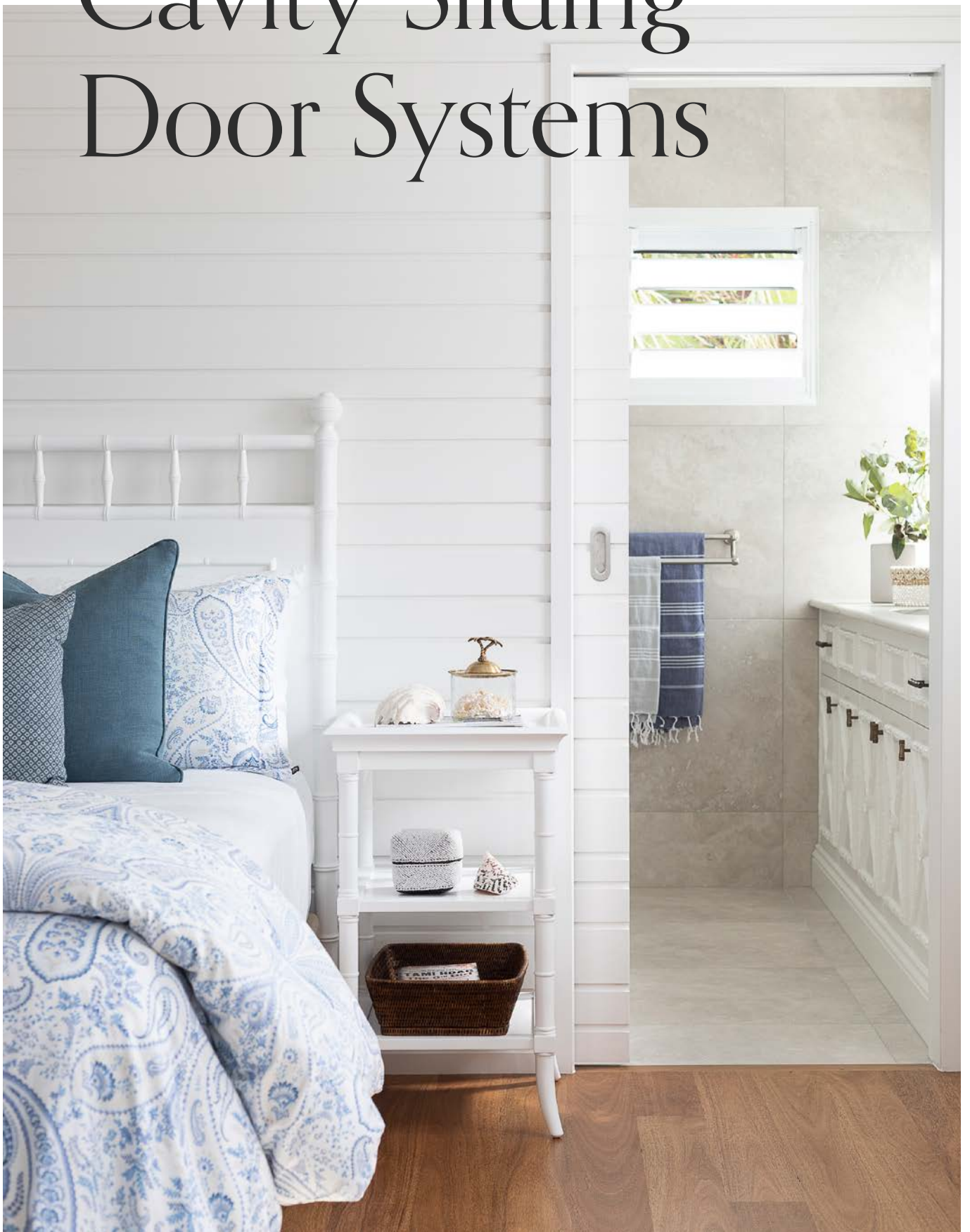


Cavity Sliding Door Systems

TRILINE ARCHITECTURAL CAVITY SLIDING DOOR SYSTEMS



TRILINE 2022

1300 239 206
sales@triline.net.au

[linkedin.com/company/triline](https://www.linkedin.com/company/triline)
[facebook.com/trilinequalitydoorsystems](https://www.facebook.com/trilinequalitydoorsystems)

@trilinedoors
triline.net.au

triline



Index

OVERVIEW

4-7

Introduction

8-11

The Range

12-13

Elevations

14-15

Opening Preparation & Configurations

16-19

Trim options

20-21

Our Process

22-27

Project Feature

INTRODUCTION

Space is precious. Create more. Saving space without compromising on design within your dwelling has never been more important.

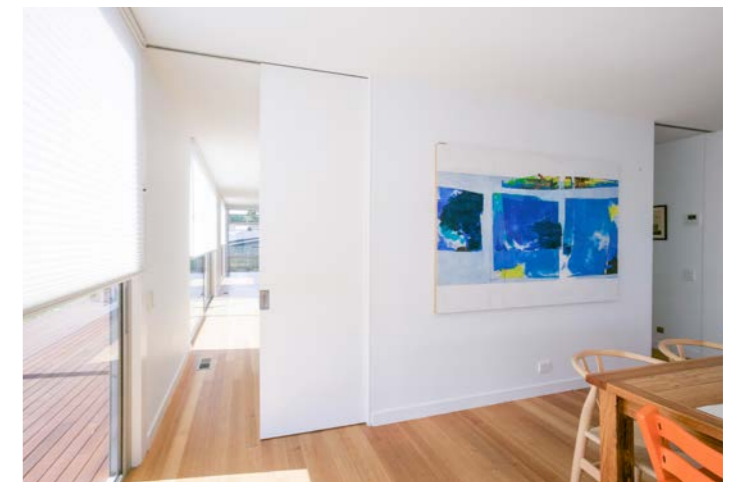
A solution-based design

Functionally, doors act as important gateways through which humans transition from one programmatic space to another. In addition, like the drawers of a building, they help us understand and compartmentalize what we do, when we do it and where we do it. With that in mind, it is easy to see how well-executed door design is imperative. Less common than a traditional swing door, sliding doors help transcend the divide between rooms through invoking an invisible quality when open and a completeness when closed. This innovative solution helps create stunning spaces that optimize connections from room to room.

Incorporating Brio Single Run 60 & Zero Clearance hardware along with refined design and sophisticated style, the exciting architectural sliding door range is a modern interior design solution.



What is the Triline Architectural cavity range?



Triline's architectural range consists of units which achieve minimalistic & clean line finishes to your doorway. These come in light weight or heavy-duty options depending on your requirements or specifications.



Why choose Triline Architectural sliding door systems?

Simple to install, strong & robust design with tested sliding door hardware, there's a Triline solution for every unique interior.

MINIMALIST

Driven by uncluttered lines and a less-is-more philosophy our units have been created to achieve a seamless transition throughout dwellings and have extended this clean look to our sliding door solutions.

STRONG

Musing only the best materials & long-lasting sliding door hardware we can ensure your projects are covered with longevity in door hardware.

ENGINEERED & CERTIFIED

Using Triline sliding door solutions you can be sure that you are using a product that is engineered for strength and certified for sustainable practices.

CUSTOMISABLE

Each project is unique in it's own way, and this means you should have flexibility when it comes to sliding door designs & solutions. Our units are fully customisable from height & widths to specialised jamb finishes.

THE RANGE

Triline Pro-Line 60

Designed to be paired with its predecessor, the Zero Clearance, our Pro-Line 60 unit is ideal for lightweight standard sized doors but can be customised for non-standard sized doors also allowing you flexibility in design & functionality. With the top hanger plates being slightly rebated into the top of the door, this removes the need for any cover strip pelmet as used on our traditional cavity units. This adds a cleaner feel to the doorway by removing extra lines creating a more seamless feel.

FEATURES



No pelmets

Achieve the same minimalist, clean lined look of the Zero Clearance cavity unit



Affordable upgrade

Affordable upgrade from the standard Phoenix unit to achieve up-market feel on standard sized sliding doors



Installation

Quicker installation time

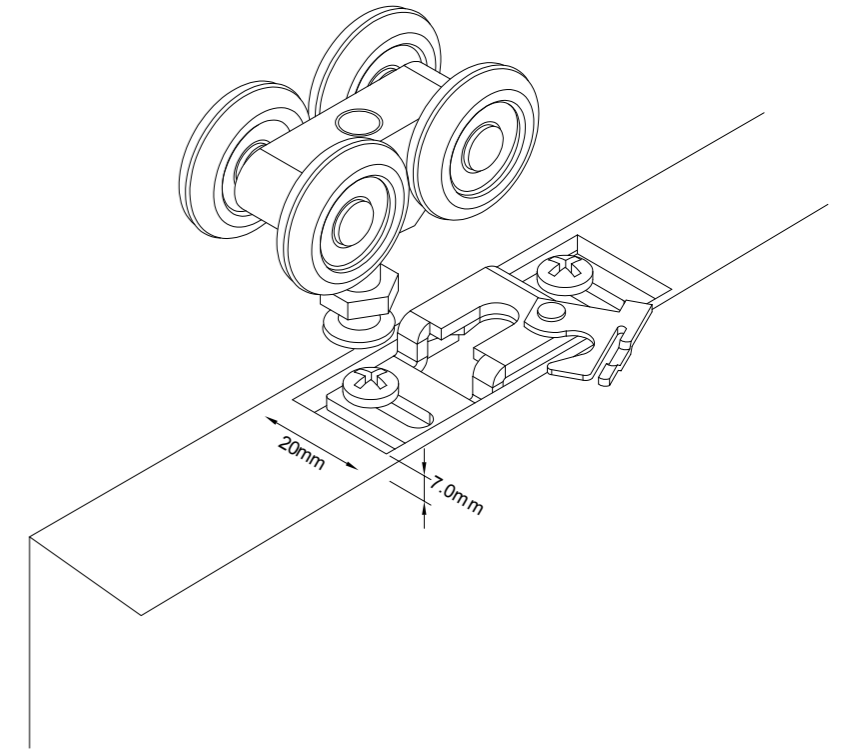


Standard sizes

Suits off the shelf doors with no need for bigger top & bottom rails in the door panel for hardware rebates

TRILINE PRO-LINE 60

Specifications

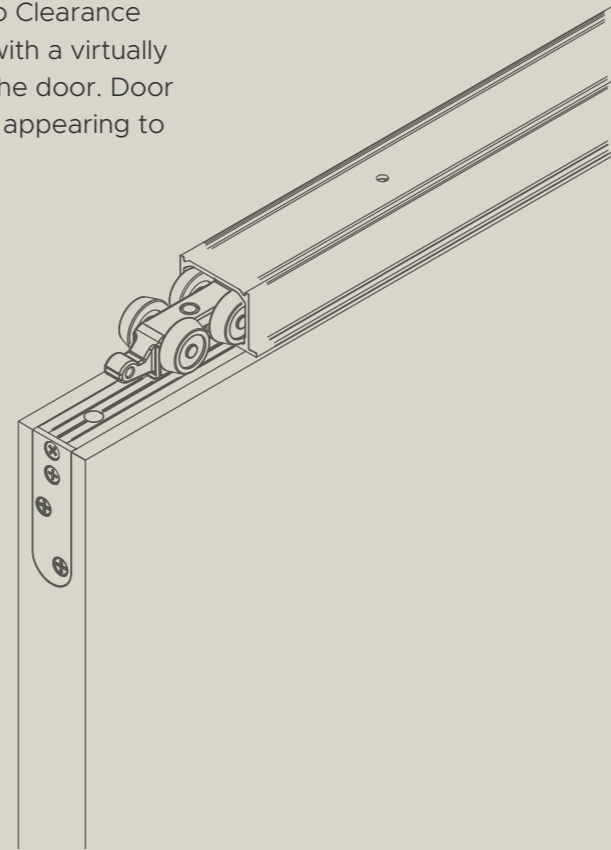


Max Door Weight	60kg
Soft Close Option	Yes
Pocket Door Release	Yes - for door weight up to 75kg
Max. Door Height	2400mm
Max. Door Width	1220mm
Min. Door Thickness	19mm
Clearance Above Door	8mm +/- 3mm
Clearance Below Door	23mm +/-3mm
Suitable for Full Height Doors	Yes
Wall Framing Min (For units up to 2100x920)	70mm
Engineered for Wall Tiles	Yes

THE RANGE

Triline Zero Clearance

Safety and operational fluidity are not compromised in this elegant sliding door system with only quality materials used and the option of less than full height or full height floor to ceiling units. The Triline Zero Clearance cavity door system brings a new dimension to minimalism with a virtually invisible 3mm clearance between the track and the top of the door. Door panels can reach an impressive 3m high and 3m wide while appearing to float between floor and ceiling.**



FEATURES



No pelmets

Achieve a minimalist, clean-lined sophisticated look



Smoother sliding

Anodised aluminium track with raised rail profile for extra engagement and for smoother sliding



Guide System

Precision bearing bottom roller guide system



Concealed

Unobtrusive hardware that is concealed from view by being rebated into the top & bottom of door

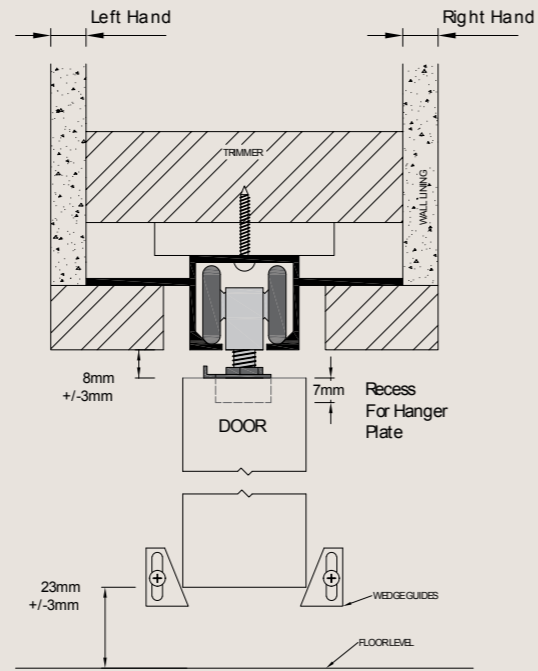
TRILINE ZERO CLEARANCE

Specifications

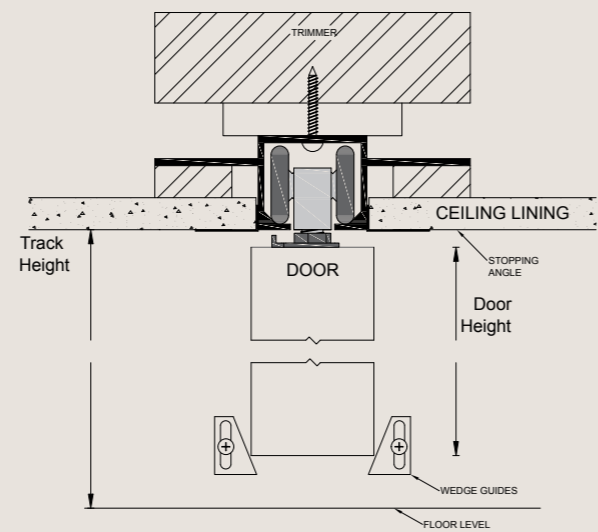
Max Door Weight	80 / 120 / 180 / 350kg
Soft Close Option	Yes - for 80kg system
Pocket Door Release	Yes - for door weight up to 75kg
Max. Door Height	3000mm**
Max. Door Width	3000mm**
Min. Door Thickness	32mm (80/120kg), 40mm (180/350kg)
Clearance Above Door	5mm +/- 2mm
Clearance Below Door	10mm +/-2mm
Suitable for Full Height Doors	Yes
Wall Framing Min (For units up to 2100x920)	70mm (For units up to 2100x920) 90mm (For units bigger than 2100x920) 96mm or 100mm (For units bigger than 2150x1500)
Engineered for Wall Tiles	Yes

**Note: max door height & width may vary depending on the weight of the door.

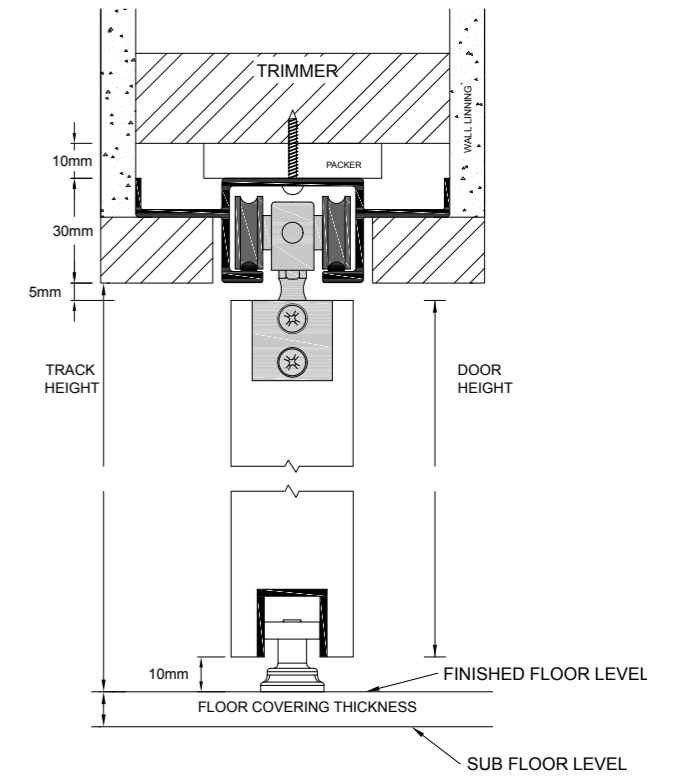
Elevations



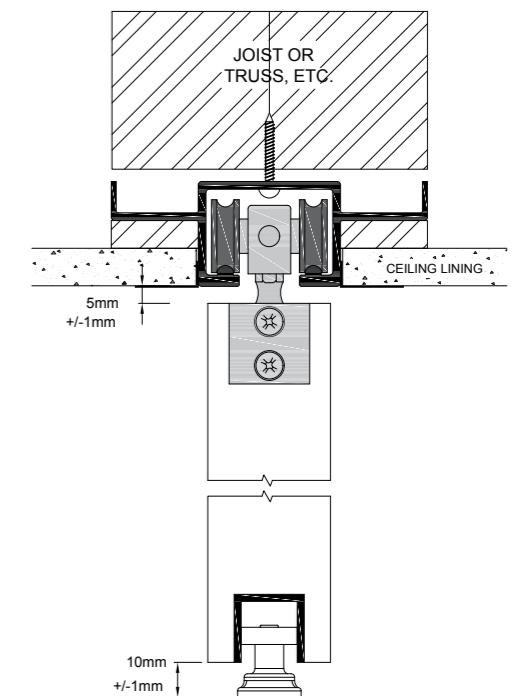
PRO-LINE 60 - LESS THAN FULL HEIGHT (UNDER BULKHEAD)



PRO-LINE 60 - FULL HEIGHT (FLOOR TO CEILING)



ZERO CLEARANCE - LESS THAN FULL HEIGHT (UNDER BULKHEAD)



ZERO CLEARANCE - FULL HEIGHT (FLOOR TO CEILING)

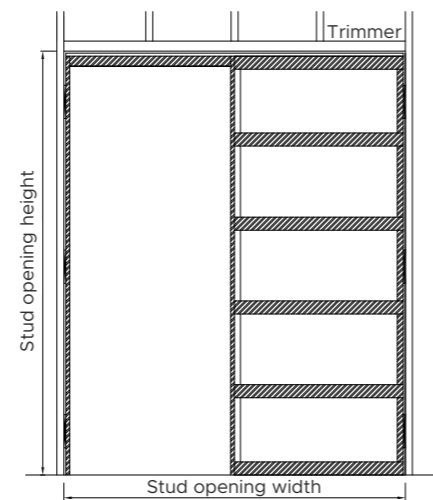
Opening Preparation & Configurations

Pro-Line 60 Cavity Door Clearances:

Between track & door: 8mm +/- 3mm
 Below door: 23mm +/- 3mm
 Opening height, floor to trimmer:
 door height + 75mm

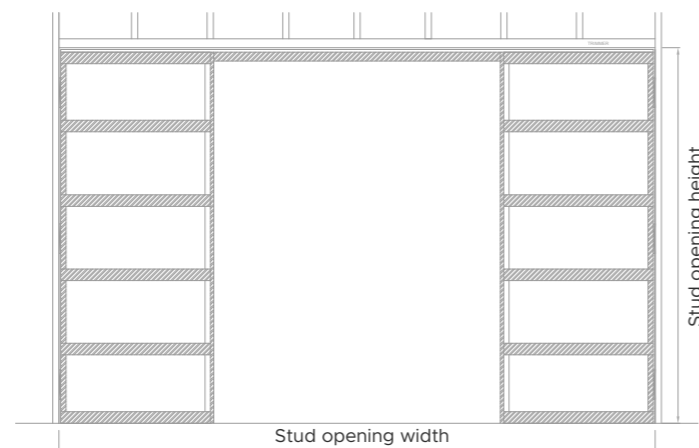
Zero Clearance Cavity Door Clearances:

Between track & door: 5mm +/- 1mm
 Below door: 10mm +/- 1mm
 Opening height, floor to trimmer: door height +
 55mm + Floor Covering Thickness (i.e. 20mm)



SINGLE DOOR OPENING

Opening width, stud to stud: 2 x door width + 60mm
 Opening height, floor to trimmer: 75mm



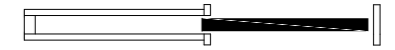
DOUBLE DOOR OPENING

Opening Width, stud to stud): 4 x door width + 60mm
 Opening Height, floor to trimmer: door height + 75mm

Configurations

SINGLE UNIT INCLUDES:

- 1 x Cavity Pocket
- 1 x Head track
- 1 x Pair of Pellets
- 1 x Closing Jamb
- 1 x Fitting Pack



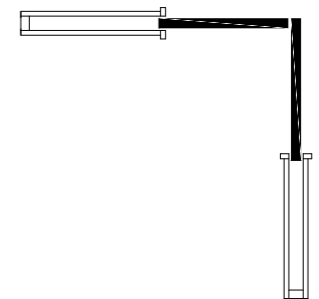
DOUBLE UNIT INCLUDES:

- 2 x Cavity Pocket
- 1 x Head track
- 1 x Pair of Pellets
- 2 x Fitting Pack



CORNER MEETING UNIT INCLUDES:

- 2 x Cavity Pocket
- 2 x Head track - 90° Mitre on Tracks for corner join
- 2 x Pairs of Pellets
- 2 x Fitting Pack



DOUBLE OVERTAKING UNIT INCLUDES:

- 1 x Cavity Pocket
- 1 x Head track
- 1 x Pair of Pellets
- 1 x Closing Jamb
- 2 x Fitting Pack



TRIPLE OVERTAKING UNIT INCLUDES:

- 1 x Cavity Pocket
- 1 x Head track
- 1 x Pair of Pellets
- 1 x Closing Jamb
- 3 x Fitting Pack

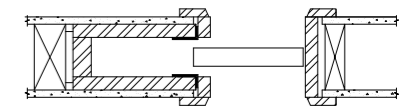




Trim Options

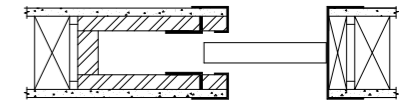
ARCHITRAVES

This is our standard setup for our cavity units. Split jambs, heads and closing jamb are all made to be fitted with architraves (supplied by others). Architrave height also matches standard swing door architrave height to create a seamless look when side by side.



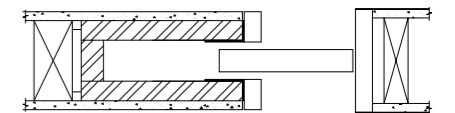
EZYJAMB

Manufactured from high-performance steel, the metal frames trim and cap the plaster edges around the door penetration. The cavity jambs are made smaller than standard for ease of wrapping over plasterboard. Triline can supply our purpose made EzyJamb flush finish system to suit your cavity slider to streamline your installation process.



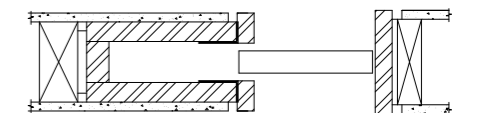
P25 STOPPING ANGLE

The jambs are all made 3mm wider to sit flush with the P25 angle (supplied by others) once this has been troweled in and painted to ensure a clean square stop finish to the door jamb.



P50 SHADOW LINE

Also requires the jambs to be made slightly wider to align with the metal P50 shadow line angle (supplied by others). This unique shadow line adds another whole dimension to the aesthetics of your doorway.

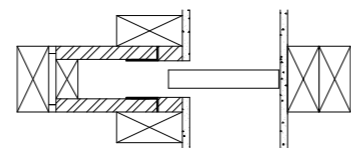




More Trim Options

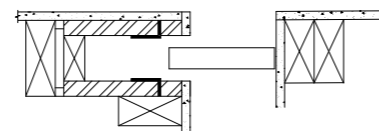
FULL WIDTH OF HALLWAY

For cavity units where the door spans the entire width of the hallway we shorten the pocket length by the lining thickness which allows the plaster/lining to run over the face of the split jambs to create a seamless finish. This gives the appearance of the door sliding out of nowhere and can be tucked completely out of sight when open. With this configuration we also can supply the steel rebated fast cap which provides a 10mm rebate for the door to close into.



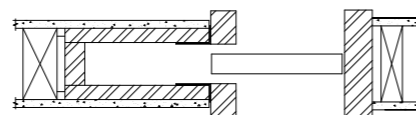
END OF HALLWAY

Where cavity units are situated on the end of the hallway, this can be set up similarly to the hallway unit noted above, with lining finishing over the face of the jamb one side and finished standard on the other.



CUSTOM JAMBS

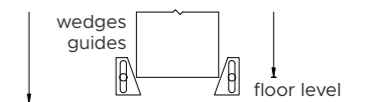
Options are endless when it comes to jamb finishes, whether it be thicker jambs, wider one side, express for skirting, or matching timber to work in with surrounding joinery.



Guide Options

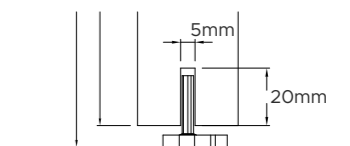
CAVITY WEDGE GUIDE

The nylon wedge shaped guide is located at the bottom of the split jambs and can be adjusted up or down to ensure the bottom of the door is held in place.



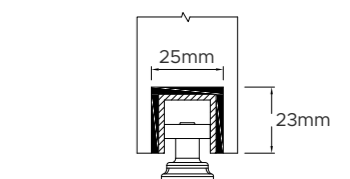
ALTERNATIVE SAW CUT GUIDE

The nylon T shaped guide is designed to slide through a 20mm deep by 5mm wide saw-cut in the bottom rail of the door panel.



ROLLER GUIDE & CHANNEL

For the ultimate quiet and smooth guide, the precision bearing roller guide & channel is mounted between the split jambs with the guide channel being rebated into the bottom of the door panel.



OUR PROCESS

Engineering

Your peace of mind is our guarantee when it comes to our manufacturing processes. You deserve to use a product that is robust, reliable, and a long-lasting solution that has been produced in the most efficient way possible.

QBCC published advice in March 2019 advising the unsuitability of some cavity sliders to support wall tiles. With this challenge raised, we wanted to ensure our cavity units were certified as compliant.

Triline formulated an engineering test on our cavity slider unit to determine the capacity of the system to withstand loading from the application of wall tiles and associated wallboard and adhesives. Testing was completed on 24th March 2020 and the Cavity Unit was found to satisfy the prototype test requirements of AS1720.1 where timber moisture levels are maintained below 15%. Testing and reporting of results to the requirements of AS1720.1 were carried out on a unit sized 2400H x 1200W to suit a 90mm frame. For more information on wall combinations, view chart on our website.

Certification

Sustainability is important to us and that is why when manufacturing the cavity units we do our best to get materials supplied in set lengths to minimise waste and increase productivity. We love to create beautiful sliding door solutions that feel like an experience and are manufactured through efficient practices



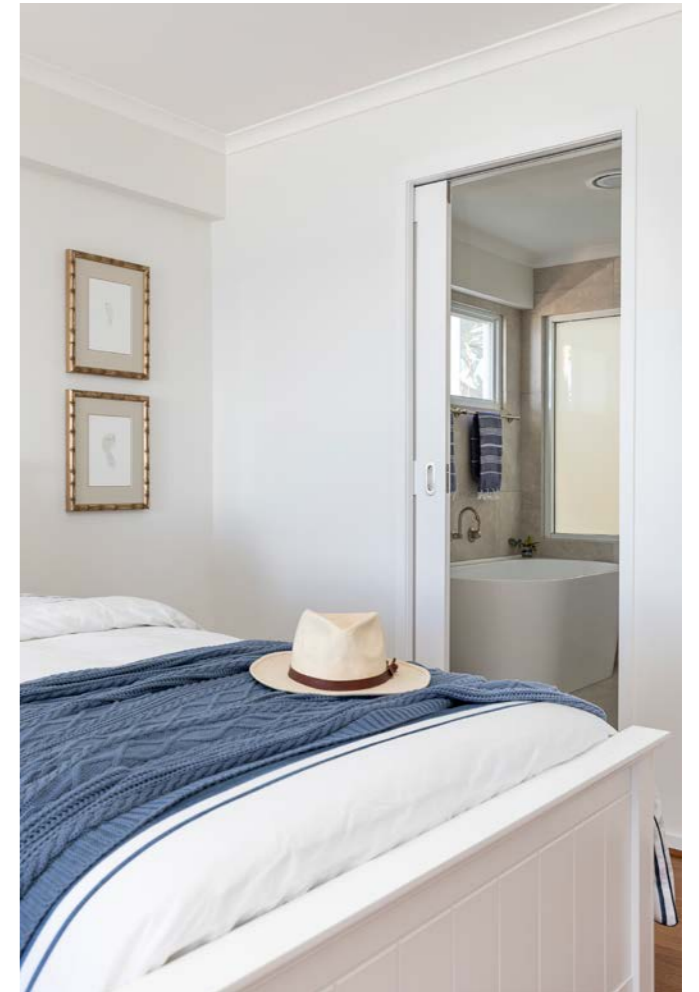
We use efficient practices to minimise waste

Project Features

This amazing house looks out to Sunshine Beach, it is light-filled, welcoming and brings that coastal beauty inside, as well as providing beautiful views outside. They have designed it with a pale, coastal elegance with a splash of the dramatic and it works beautifully as a fun-filled family home.

Our Zero Clearance units were used through out with doors to the WIR & Ensuite in the bedroom and door to the laundry having the wall cladding continue onto the door panels themselves. This makes a stunning feature of the doors as well as being pleasing to the eye with the shadow lines continuing across the doors.

Modern minimalist-clean lines demand unobtrusive hardware that is concealed from view. The Triline Zero Clearance™ range has been designed to achieve clearances of 3-5mm between the track & top of the door. With no hanger plates or screws protruding above the top edge of the door, the door can be adjusted to achieve a minimal Zero Clearance™ look. Available for full height doors, or to suit standard height doors our architectural cavity sliders will cover all your design requirements.



Project Feature — Pro-Line 60 — Residential Kitchen

Built with flexibility and room flow in mind, the clean lines and lightweight fittings of the Pro-Line 60 cavity unit were the main features that drew the attention of the builders on this new home build. Paired with standard off the shelf doors they used throughout the home they were also able to achieve the clean line look to the walk-in pantry.



Clean lines and lightweight fittings

Using a sliding door to the pantry in this application reduces any obstruction caused by your typical swing door that would swing either into the pantry or kitchen space.

Supplied with a closing jamb and all necessary hardware, this will make installation quick and easy and help achieve that clean line look with all your standard cavities.



PROJECT FEATURE

Double Overtaking Corner Meeting Unit

2020 changed a lot of things about how we work in the office environment. We are seeing more and more home builds incorporating office spaces, whether it's a separate room or added by divided living spaces. This project done in Doonan QLD was completed with our floor to ceiling Zero Clearance, double overtaking cavity sliding doors. These look sophisticated and are a neat & easy way to divide rooms with out compromising on style and functionality. At any time, all the doors can be dramatically opened up, merging the two spaces into one. Or, alternatively closed off for more privacy.

With side-by-side double tracks, these overtaking doors slide neatly into one pocket and are guided on the bottom by an off-set roller guide which removes the need for guide track to be mounted into the floor. This also helps maximise the seamless flow to the floor space and with the doors fully open helps achieve the feeling of one larger living space.

Zero Clearance Cavity Slider
Private Residential —Sunrise Road, Doonan QLD





triline.
net.au