

# Triline Cavity Slider Selection Sheet

NAME: \_\_\_\_\_ COMPANY: \_\_\_\_\_  
 PHONE: \_\_\_\_\_ RESELLER: \_\_\_\_\_  
 DATE: \_\_\_\_\_ RESELLER EMAIL: \_\_\_\_\_  
 QTY: \_\_\_\_\_ DOOR NO. (S): \_\_\_\_\_ JOB REFERENCE: \_\_\_\_\_

## Cavity Type

### Traditional - Pelmet Style

- PHOENIX 60KG
- HERCULES 120KG

### Architectural - No Pelmet

- PROLINE 60KG
- ZERO CLEARANCE 120KG
- FRAMELESS GLASS

### Accessible & Auto

- ACCESS CAVITY - AS1428.1-2009 COMPLIANT
- AUTO CAV 80 - AUTOMATIC SLIDER

## Configuration

- SINGLE



- DOUBLE OVERTAKER



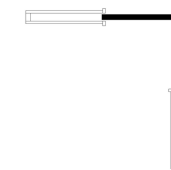
- DOUBLE



- TRIPLE OVERTAKER

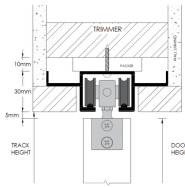


- CORNER MEETING DOUBLE

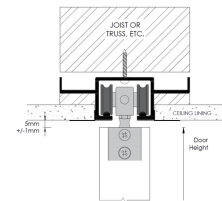


## Head Detail

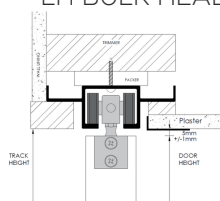
- BULK HEAD (LESS THAN FULL HEIGHT)



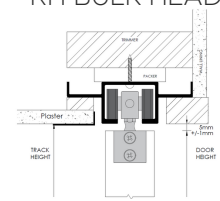
- FULL HEIGHT



- HALF FULL HEIGHT - LH BULK HEAD



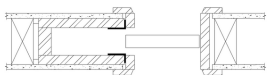
- HALF FULL HEIGHT - RH BULK HEAD



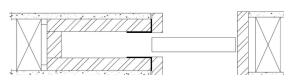
NOT AVAILABLE FOR PHOENIX OR HERCULES

## Jamb Detail

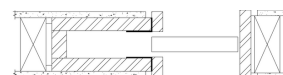
- ARCHITRAVES



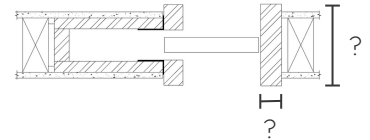
- P25 - SQUARE STOP



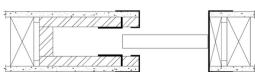
- P50 SHADOW LINE



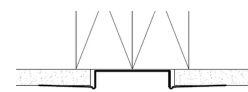
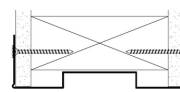
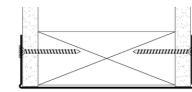
- EXPRESS JAMB/THICK REVEAL



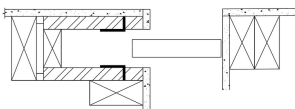
- EZYJAMB - KIT INCL.



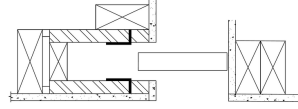
- FLAT FACED CAP or  REBATED CAP or  FAST CAP



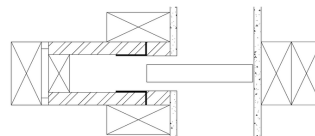
- END OF HALLWAY



- END OF HALLWAY



- FULL WIDTH OF HALLWAY



## Accessories

- SOFT CLOSE
- POCKET DOOR RELEASE
- CAVITY SWITCH UNIT

## Dimensions (Critical Only)

DOOR HEIGHT: \_\_\_\_\_ DOOR WIDTH: \_\_\_\_\_ STUD WIDTH: \_\_\_\_\_  
 CLEAR OPENING HEIGHT: \_\_\_\_\_ CLEAR OPENING WIDTH: \_\_\_\_\_ LINING: \_\_\_\_\_  
 STUD OPENING HEIGHT: \_\_\_\_\_ STUD OPENING WIDTH: \_\_\_\_\_ DOOR THICKNESS: \_\_\_\_\_

EXTRA NOTES:  
 (e.g. floor covering thickness,  
 no closing jamb, etc.)

- FLUSH JAMB:
- OR FLUSH PULL:
- (50MM PROJECTION)
- OR NOMINATE OTHER: \_\_\_\_\_