

INSTALLATION INSTRUCTIONS

Triline Zero Clearance™

Maximum door weight:

- 80kg as standard
- 120kg, 180kg, 350kg - optional

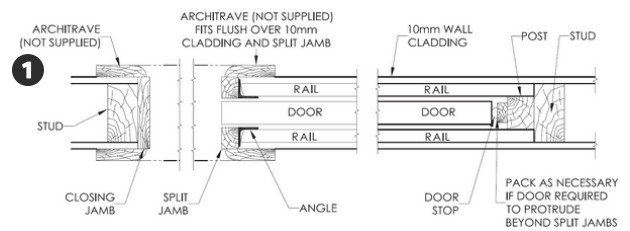
Frames are designed to accept a standard door thickness of 35mm, however 90mm and 100mm frames can be made to accept thicker doors. The frames include quality door hardware supplied by Brio.

Use of 70mm and 75mm frames is not recommended for bathrooms and laundries where moisture may cause the doors or rails to warp.

1. CHECK

Check that you have purchased the correct Cavity Door Frame for your unclad wall (stud) thickness, lining thickness, door size and door thickness. The design allows for the door to slide into the frame and be flush with the split jambs. **1**

If you require the door to project into the opening, when fully open, pack behind the door stop on the post or install a wider door.



2. PREPARE THE OPENING

Opening width (stud to stud) **2**

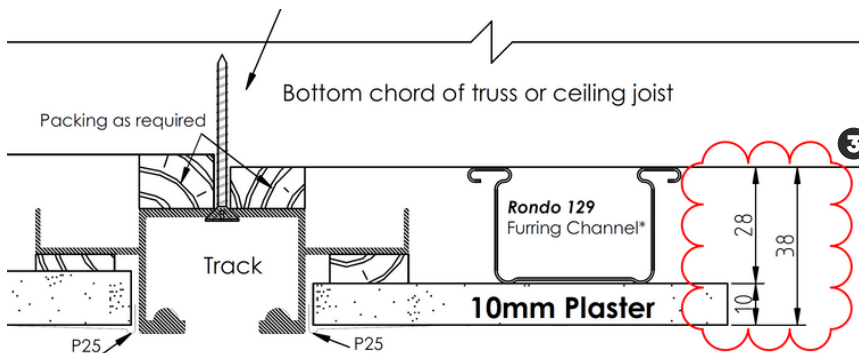
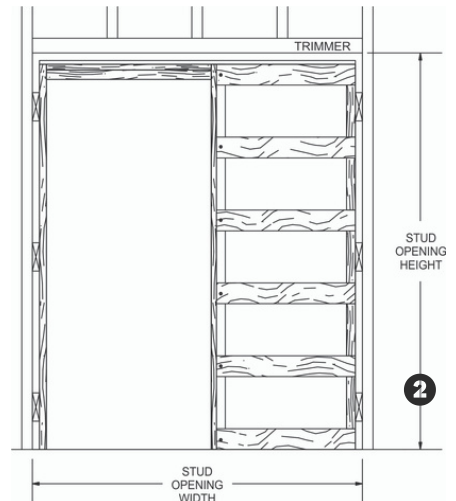
Single door: Door width x 2 + 60mm (for door flush with split jambs)

Double door: Door width x 4 + 60mm (for doors flush with split jambs)

Opening height (floor to trimmer) = door height + 55mm + floor covering thickness

Frames are designed to fit onto the floor surface (i.e. concrete/timber) before floor coverings.

For full height units - a minimum of 40mm is required between the underside of the ceiling and any joists or trusses above. **3**

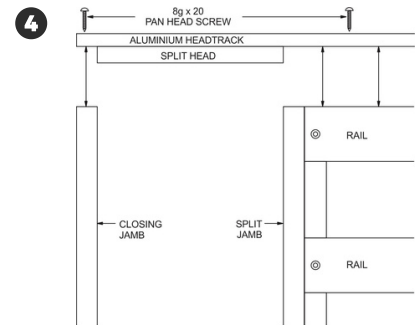


3. CLEARANCE UNDER THE DOOR

The clearance under the door is adjustable from approximately 10 – 12mm above the floorcovering.

4. ASSEMBLE THE FRAME

The aluminium head-track is to be screwed down to the top of the frame with the split head against the split jamb. Cut the closing jamb to the exact length you require, then screw it to the underside of the aluminium head-track against the split head. **4**
The frame must be installed with the head-track level. Screw the track to the trimmer through the holes in the centre of the track.



5. INSTALL THE FRAME & DOOR INSTALLATION

Ensure that the floor is level beneath the frame.
Place frame into opening, ensuring that it is square, plumb and level.
Pack as necessary between REAR POST and STUD FRAME and fix off to framework and floor.

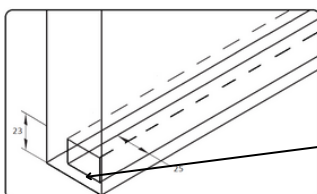
We recommend you hang the door temporarily before the plaster board is clad to make sure the cavity slider fittings are correctly installed. However, we recommend that you remove the door again before plaster board is clad and only rehang the door when plaster is dry and the door has been completely sealed and painted.

6. GUIDES

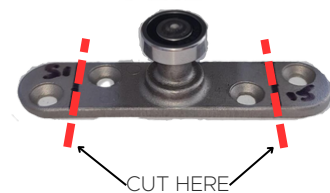
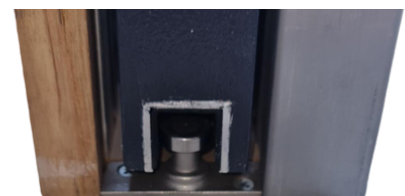
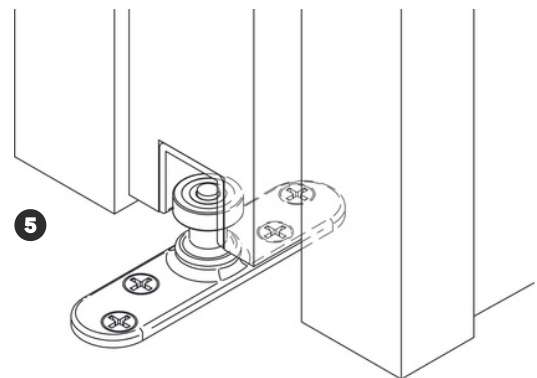
Fit roller guide to base of cavity unit with the bearing centrally in between the split jambs. **5**
If the guide is set too far back it will disengage with the door when it is fully closed. Screw aluminium channel into the rebate in the bottom of the door using countersunk screws.

TIP: How to Install Roller Guide so it Doesn't Protrude into Opening

- Measure the distance between the split jambs at the bottom of the cavity.
- Using a 1mm angle grinder, cut tabs off evenly from each side of the roller guide so it sits centred in the throat.
- To further enhance the finish, stop the bottom guide channel rebate short from the edge of the door so it can't be seen.
- To do this, stop bottom guide channel rebate short by 7-8mm from the leading edge of the door.
- Ensure the guide channel is kept the same length as the width of the door so it remains engaged with the roller guide when in the closed position.
- Set the roller guide wheel back from the face of the split jambs by 8mm.

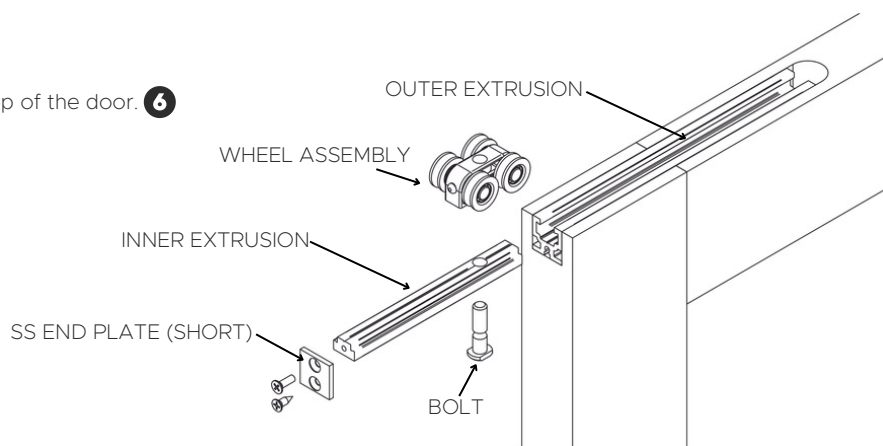


STOP REBATE SHORT FROM
EDGE OF DOOR BY 8MM



7. FIT HANGER PLATES

Fit outer extrusions into the rebates in the top of the door. **6**



8. HANG DOOR

Insert wheels with bolt and inner extrusion attached into track. Adjust rear wheels to height required (4 – 6mm down from track). Place the door at 90° to the track and insert inner extrusion into outer extrusion, (already fixed into the rebate in the door). Secure inner extrusion with small stainless steel end plate (larger plate required for doors over 50kg).

Slide the rear of the door into the cavity until it is parallel with the track. Insert and fit front wheels as per rear set.

Please note:

The internal extrusion has an offset hole for the bolt.

The rear wheels must be set up with the hole 25mm from the back edge of the door. The front set of wheels must be set with the bolt 110mm from the leading edge of the door.

9. FINISHING

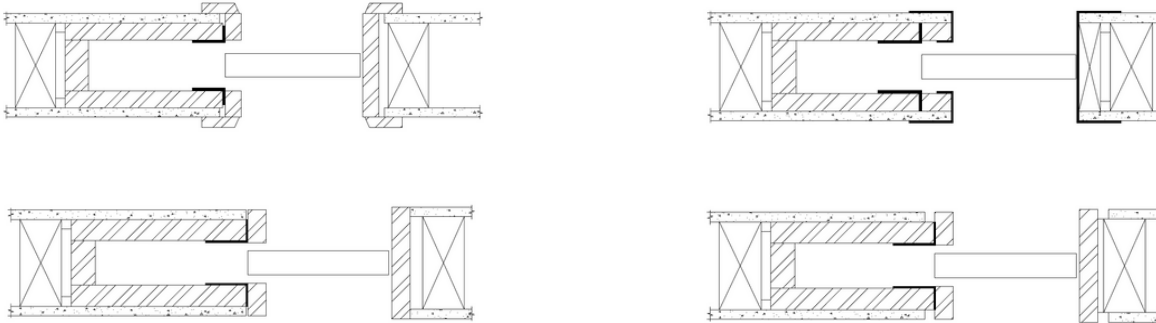
Position the CLOSING JAMB to suit the door when closed, then pack and secure the closing jamb in place.

10. CHECK DOOR OPERATION BEFORE THE FRAME IS CLAD

Once the doors are installed, position the track-stops in the head-track where the doors meet, so that neither of the doors slide fully out of the cavity, past the guides. Once they are in place tighten the screws to secure.

11. TRIM FINISH

Once the wall has been clad, fit architrave, CavKit, P25 or P50 around the jambs and split head, being careful that nails do not penetrate through rails.



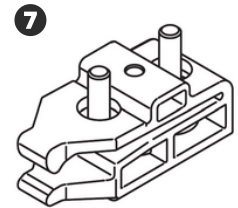
12. TO REMOVE DOOR

The door can be removed by reversing procedures 8 & 7.

13. DOUBLE DOOR INSTALLATION

Assemble frames and install as per steps 4-8. Double units come standard with one-piece double head-track and two track-stops. **7**

Double frames must be level plumb and checked for alignment (no twist) so doors line up in the closed position.



14. FIT ACCESSORIES

Soft close - install as per Soft Closer Installation

Pocket Door Release - install as per Door Release Installation

Product improvement is a continuous process & specifications are subject to change without notice.

© COPYRIGHT 2023 E&OE