

Access Cavity Sliders

CAVITY SLIDING DOORS



TRILINE 2023

1300 239 206
sales@triline.net.au

@trilinedoors
facebook.com/trilinequalitydoorsystems

triline.net.au



Triline's Access cavity sliders provide an innovative solution for those who struggle with typical swinging door barriers, allowing for more independently accessible and inclusive buildings and dwellings.

IN DETAIL

The Triline Access™ cavity slider is designed specifically to comply with Australian Standard AS1428.1-2009.

Traditional manual swinging doors can present significant barriers for individuals with limited mobility or disabilities, such as reduced grip strength, muscle power, or balance. These challenges are compounded by factors such as door closers, narrow corridors, small clear-opening widths, and the need to manoeuvre canes, crutches, wheelchairs, or frames. In response to these challenges,

Triline has developed an innovative Access cavity slider system that eliminates many of the typical swinging door barriers that restrict the movement of disabled individuals.

FEATURES



Compliant

Clear walkthrough opening and clearances around handle complies with AS 1428.1-2009



Door Weight

Standard carrying capacity is 80kg. Max door weight is 120kg.



Heavy Duty

Raised rail track profile & anodised aluminium for a smooth ride with 4 wheel reinforced hanger.



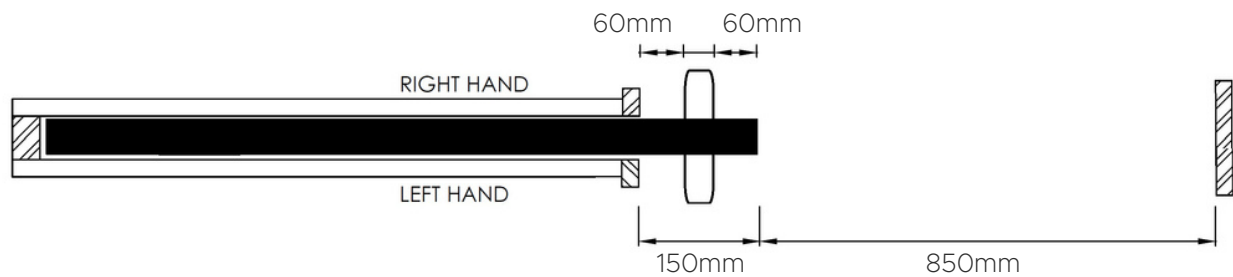
Installation

Setup with projection and correct clearances so no need for any adjustments on site.

IN DETAIL

Australian Standard AS1428.1-2009

- Minimum clear opening of a doorway on a continuous accessible path of travel must be 850mm when measured from the edge of the opened door to the door jamb (see below)
- Door leaf needs to sit proud of the cavity to allow for a projecting handle to make it easy for the user to open/close with a minimum of 60mm clearance either side of the door handle.
- To suit 1020 wide door size
- To suit 1950 wide stud opening



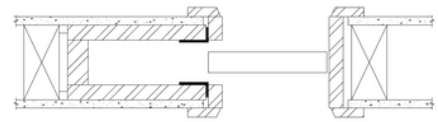
The Access cavity slider system promotes independent mobility and accessibility for elderly, aged care, and disabled people. In compliance with Australian building standard AS 1428.1-2009, Triline's Access cavity sliders provide a practical and convenient solution for architects, builders, and building owners to make their buildings and dwellings more inclusive and accessible to everyone.



Trim Options

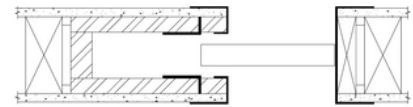
ARCHITRAVES

This is our standard setup for our cavity units. Split jambs, heads and closing jamb are all made to be fitted with architraves (supplied by others). Architrave height also matches standard swing door architrave height to create a seamless look when side by side.



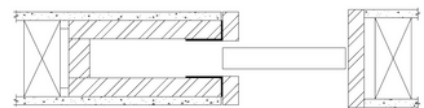
EZYJAMB CAVKIT

Manufactured from high-performance steel, the metal frames trim and cap the plaster edges around the door penetration. The cavity jambs are made smaller than standard for ease of wrapping over plasterboard. Triline can supply our purpose made EzyJamb flush finish system to suit your cavity slider to streamline your installation process.



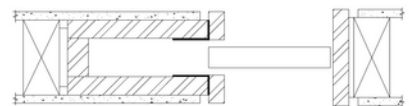
P25 STOPPING ANGLE

The jambs are all made 3mm wider to sit flush with the P25 angle (supplied by others) once this has been troweled in and painted to ensure a clean square stop finish to the door jamb.



P50 SHADOW LINE

Also requires the jambs to be made slightly wider to align with the metal P50 shadow line angle (supplied by others). This unique shadow line adds another whole dimension to the aesthetics of your doorway.



Opening Preparation

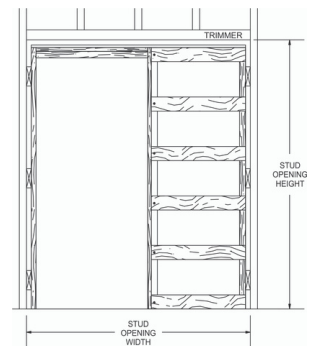
Frames are designed to sit on to the floor surface (i.e. concrete/timber) before floor coverings.

DOOR CLEARANCES

Between track & door: 13mm +/-3mm
Below door: 18mm +/-3mm

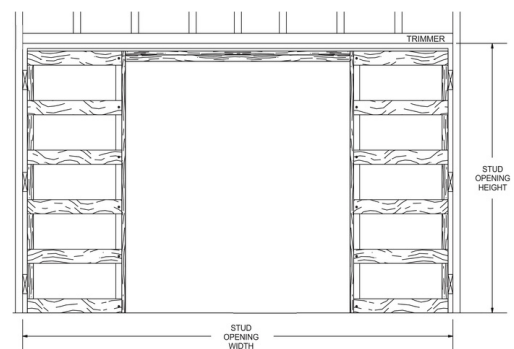
SINGLE DOOR OPENING

Opening Width (Stud to Stud): $2 \times \text{door width} + 60\text{mm} - \text{Door Projection}$
Opening Height (Floor to Trimmer): $\text{door height} + 75\text{mm}$



DOUBLE DOOR OPENING

Opening Width (Stud to Stud): $4 \times \text{door width} + 60\text{mm} - (2 \times \text{Door Projection})$
Opening Height (Floor to Trimmer): $\text{door height} + 75\text{mm}$



Accessories

ENGINEERING & CERTIFICATION

All Triline cavity sliders up to 2400 x 1200 are certified to carry floor to ceiling tiles as per the Prototype Test requirements outlined in AS 1720 Timber Structures—Design Methods.

See our brochure for further details on Total Equivalent Test Load and recommended installation combinations.

Sustainability is important to us and that is why when manufacturing the cavity units we do our best to get materials supplied in set lengths to minimise waste and increase productivity.

We love to create beautiful sliding door solutions that feel like an experience and are manufactured through efficient practices

SOFT CLOSE

The mechanism catches the moving door and reduces its speed before drawing it towards the jamb ensuring a quiet and soft stop every time. This reduction in speed also means little fingers are kept safe from slamming doors.



POCKET DOOR RELEASE

The Triline Cavity Release is the perfect solution for accessible housing design. You no longer need to use door pulls or small levers on the edge of the door to pull it out of the wall cavity.

With the door flush inside the cavity, you simply push the door in and the pocket door release pops the door out from the cavity enough so you can continue to slide it closed. This makes closing your sliding door easy and hassle-free.





Toilet 


VACANT
IN USE



triline.
net.au

Head Office/Factory
86 Sunderland Street
Derwent Park TAS 7009

1300 239 206
sales@triline.net.au

[linkedin.com/company/triline](https://www.linkedin.com/company/triline)
[facebook.com/trilinequalitydoorsystems](https://www.facebook.com/trilinequalitydoorsystems)

@trilinedoors
triline.net.au