

# Concept<sup>TM</sup>

CAVITY SLIDING DOORS



TRILINE 2023

1300 239 206  
sales@triline.net.au

@trilinedoors  
facebook.com/trilinequalitydoorsystems

triline.net.au

**triline**



The Triline Concept™ cavity slider has been designed to offer an architectural flush finish look, with no hanger plates or fixing screws visible above the door.



Concept Cavity Slider

## IN DETAIL

The Triline Concept™ cavity slider has been designed to offer an architectural flush finish look, with no hanger plates or fixing screws visible above the door.

As with all Triline cavity sliders, the Concept™ range has been designed with robustness and strength being key features to ensure your project is complemented with a reliable, quality product.

The compact structural aluminum track profile ensures that the wheels cannot disengage and serves to reduce the risk of debris in the track, stopping the wheels from jumping, as any debris is less likely to accumulate on the raised rails.

The Concept™ cavity slider can be supplied with two optional beads to cover the clearance at the top of the door, providing a look similar to a regular swing door fitted with door stops.

## FEATURES



### Optional Pelmets

Can be supplied with two optional beads to cover the clearance at the top of the door, providing a look similar to a regular swing door fitted with door stops.



### Smoother Sliding

Anodised aluminium track with raised rail profile for extra engagement and for smoother sliding



### Door Weight

Standard carrying capacity is 80kg. Max door weight is 120kg.

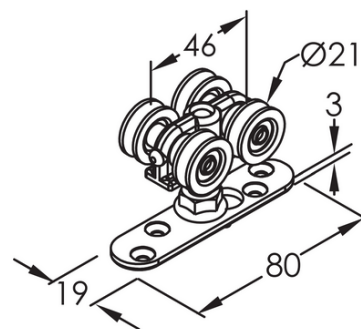
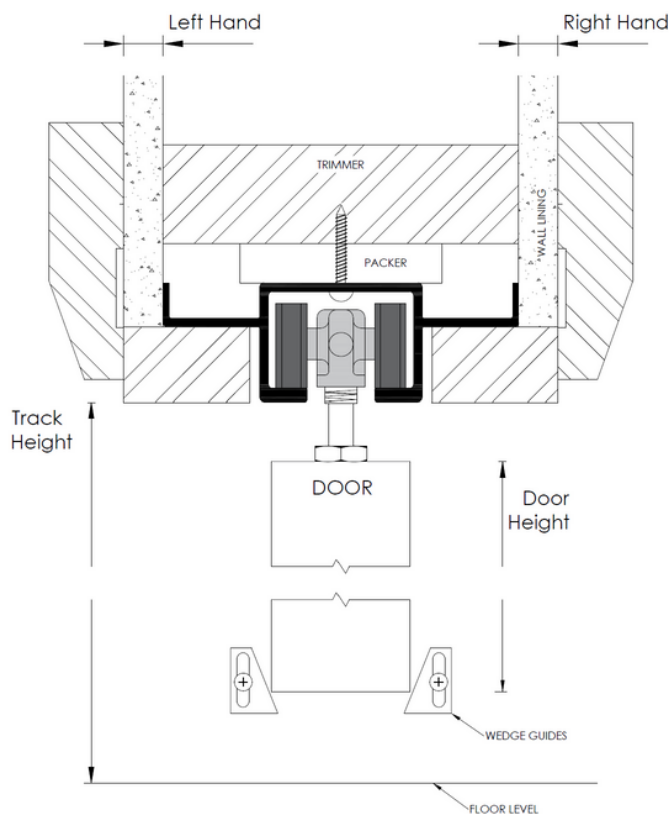


### Concealed

Unobtrusive hardware that is concealed from view by being rebated into the top of door.

IN DETAIL

# Door Clearances



The Concept™ unit allows for a minimal 10-15mm gap between the track and the top of the door. Perfectly suited to full height openings, it is also available for standard height doors as single or double door units.

To compliment the Concept™ range, Triline can also offer various options for doors to suit providing a complete package. Doors can be rebated for hardware if required, saving time during installation. The Concept unit is the perfect solution to high use areas in residential, commercial and industrial applications.





Concept Cavity Slider

# Opening Preparation

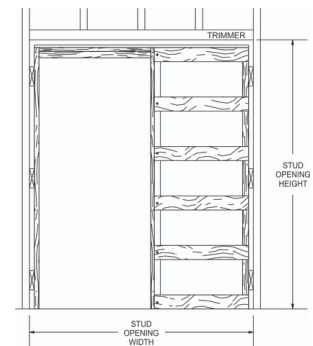
Frames are designed to sit on to the floor surface  
(i.e. concrete/timber) before floor coverings.

## DOOR CLEARANCES

Between track & door: 13mm +/-3mm  
Below door: 18mm +/-3mm

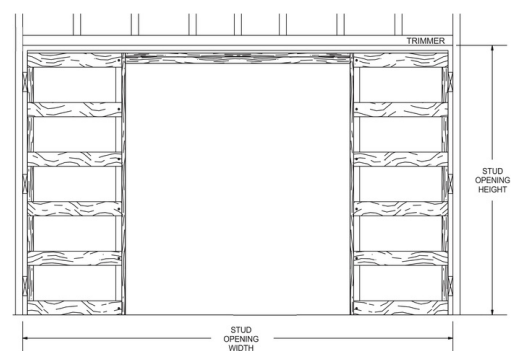
## SINGLE DOOR OPENING

Opening Width (Stud to Stud):  $2 \times \text{door width} + 60\text{mm} - \text{Door Projection}$   
Opening Height (Floor to Trimmer):  $\text{door height} + 75\text{mm}$



## DOUBLE DOOR OPENING

Opening Width (Stud to Stud):  $4 \times \text{door width} + 60\text{mm} - (2 \times \text{Door Projection})$   
Opening Height (Floor to Trimmer):  $\text{door height} + 75\text{mm}$





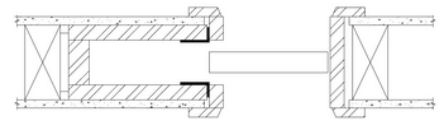


# Trim Options

---

## ARCHITRAVES

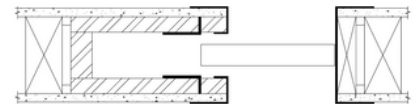
This is our standard setup for our cavity units. Split jambs, heads and closing jamb are all made to be fitted with architraves (supplied by others). Architrave height also matches standard swing door architrave height to create a seamless look when side by side.



---

## EZYJAMB CAVKIT

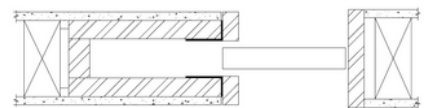
Manufactured from high-performance steel, the metal frames trim and cap the plaster edges around the door penetration. The cavity jambs are made smaller than standard for ease of wrapping over plasterboard. Triline can supply our purpose made EzyJamb flush finish system to suit your cavity slider to streamline your installation process.



---

## P25 STOPPING ANGLE

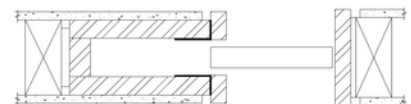
The jambs are all made 3mm wider to sit flush with the P25 angle (supplied by others) once this has been troweled in and painted to ensure a clean square stop finish to the door jamb.



---

## P50 SHADOW LINE

Also requires the jambs to be made slightly wider to align with the metal P50 shadow line angle (supplied by others). This unique shadow line adds another whole dimension to the aesthetics of your doorway.





# Accessories

## ENGINEERING & CERTIFICATION

All Triline cavity sliders up to 2400 x 1200 are certified to carry floor to ceiling tiles as per the Prototype Test requirements outlined in AS 1720 Timber Structures—Design Methods.

See our brochure for further details on Total Equivalent Test Load and recommended installation combinations.

Sustainability is important to us and that is why when manufacturing the cavity units we do our best to get materials supplied in set lengths to minimise waste and increase productivity.

We love to create beautiful sliding door solutions that feel like an experience and are manufactured through efficient practices

---

## SOFT CLOSE

The mechanism catches the moving door and reduces its speed before drawing it towards the jamb ensuring a quiet and soft stop every time. This reduction in speed also means little fingers are kept safe from slamming doors.



---

## POCKET DOOR RELEASE

The Triline Cavity Release is the perfect solution for accessible housing design. You no longer need to use door pulls or small levers on the edge of the door to pull it out of the wall cavity.

With the door flush inside the cavity, you simply push the door in and the pocket door release pops the door out from the cavity enough so you can continue to slide it closed. This makes closing your sliding door easy and hassle-free.





# triline. net.au

Queensland Factory  
4 Railway Court  
Glanmire QLD 4570

1300 239 206  
[sales@triline.net.au](mailto:sales@triline.net.au)

[linkedin.com/company/triline](https://www.linkedin.com/company/triline)  
[facebook.com/trilinequalitydoorsystems](https://www.facebook.com/trilinequalitydoorsystems)

@trilinedoors  
[triline.net.au](http://triline.net.au)