

Hercules™

CAVITY SLIDING DOORS



TRILINE 2024

1300 239 206
sales@triline.net.au

@trilinedoors
facebook.com/trilinequalitydoorsystems

triline.net.au

triline®

The Triline Hercules™ cavity slider is designed for doors up to 120kg in weight for residential and commercial applications.



Hercules Cavity Slider



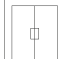


IN DETAIL

As with all Triline cavity sliders, the Hercules™ range has been designed with robustness and strength being key features to ensure your project is complimented with a reliable, quality product.

The compact structural aluminium track profile ensures that the wheels cannot disengage and serves to reduce the risk of debris in the track causing the wheels to jump, as any debris is less likely to accumulate on the raised rails.

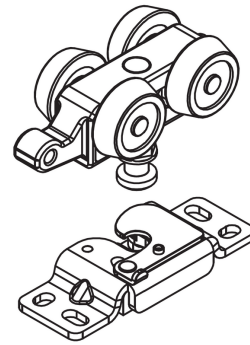
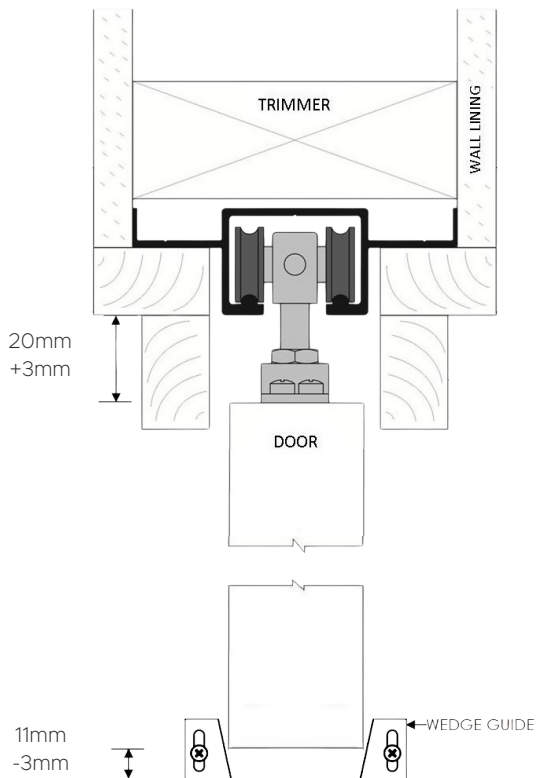
The Hercules™ hangers structural construction, steel fixing plates and hanger bolts ensure long life. Our proven 4-wheel reinforced nylon outer tyre hanger technology, with chrome steel precision bearings, is standard. This combination, with the unique Raised Rail track profile, offers years of silent smooth operation and superior rolling performance.

FEATURES

	Traditional	32mm slim look pelmet
	Door Weight	Standard carrying capacity is 120kg.
	Standard	Suits standard sized off the shelf doors or can be made to suit custom sizes.
	Installation	Components cut to length for quick and easy install.
	Durable	4 wheel reinforced hanger ideal for heavier weight door panels.

IN DETAIL

Door Clearances



The Hercules™ cavity system is suitable for single doors sliding to one side or double doors sliding either side on a single track.

The Hercules™ cavity slider allows for simple height adjustment, by simply unscrewing the removable pelmet and raising or lowering the hanger bolt. The fixing plate also features two anti-slip tabs to prevent the door from disengaging from the hanger bolt during adjustment.



MS



Hercules Cavity Slider



Opening Preparation

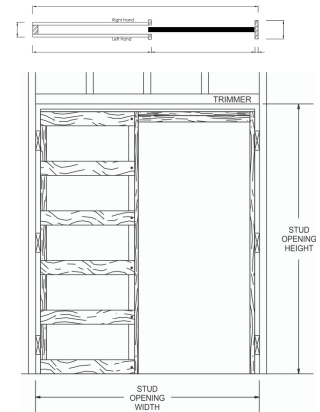
Frames are designed to sit on to the floor surface (i.e. concrete/timber) before floor coverings.

DOOR CLEARANCES

Between track & door: 20mm +3mm
Below door: 11mm -3mm

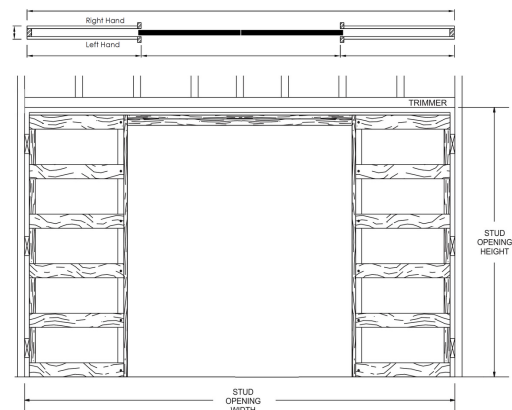
SINGLE DOOR OPENING

Opening Width (Stud to Stud): $2 \times \text{door width} + 60\text{mm} - \text{Door Projection}$
Opening Height (Floor to Trimmer): $\text{door height} + 75\text{mm}$



DOUBLE DOOR OPENING

Opening Width (Stud to Stud): $4 \times \text{door width} + 60\text{mm} - (2 \times \text{Door Projection})$
Opening Height (Floor to Trimmer): $\text{door height} + 75\text{mm}$

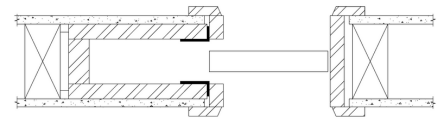




Trim Options

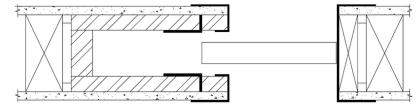
ARCHITRAVES

This is our standard setup for our cavity units. Split jambs, heads and closing jamb are all made to be fitted with architraves (supplied by others). Architrave height also matches standard swing door architrave height to create a seamless look when side by side.



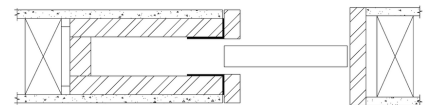
EZYJAMB CAVKIT

Manufactured from high-performance steel, the metal frames trim and cap the plaster edges around the door penetration. The cavity jambs are made smaller than standard for ease of wrapping over plasterboard. Triline can supply our purpose made EzyJamb flush finish system to suit your cavity slider to streamline your installation process.



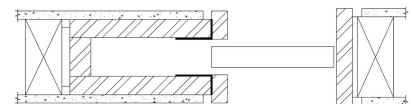
P25 STOPPING ANGLE

The jambs are all made 3mm wider to sit flush with the P25 angle (supplied by others) once this has been troweled in and painted to ensure a clean square stop finish to the door jamb.



P50 SHADOW LINE

Also requires the jambs to be made slightly wider to align with the metal P50 shadow line angle (supplied by others). This unique shadow line adds another whole dimension to the aesthetics of your doorway.



Accessories

Engineering & Certification

All Triline cavity sliders up to 2400 x 1200 are certified to carry floor to ceiling tiles as per the Prototype Test requirements outlined in AS 1720 Timber Structures—Design Methods.

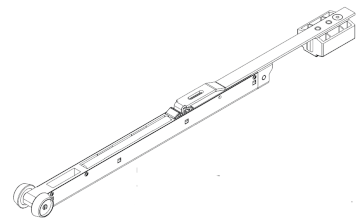
See our brochure for further details on Total Equivalent Test Load and recommended installation combinations.

Sustainability is important to us and that is why when manufacturing the cavity units we do our best to get materials supplied in set lengths to minimise waste and increase productivity.

We love to create beautiful sliding door solutions that feel like an experience and are manufactured through efficient practices

Soft Close

The mechanism catches the moving door and reduces its speed before drawing it towards the jamb ensuring a quiet and soft stop every time. This reduction in speed also means little fingers are kept safe from slamming doors.



Pocket Door Release

The Triline Cavity Release is the perfect solution for accessible housing design. You no longer need to use door pulls or small leavers on the edge of the door to pull it out of the wall cavity.

With the door flush inside the cavity, you simply push the door in and the pocket door release pops the door out from the cavity enough so you can continue to slide it closed. This makes closing your sliding door easy and hassle-free.





triline.
net.au

Head Office/Factory
86 Sunderland Street
Derwent Park TAS 7009

1300 239 206
sales@triline.net.au

[linkedin.com/company/triline](https://www.linkedin.com/company/triline)
[facebook.com/trilinequalitydoorsystems](https://www.facebook.com/trilinequalitydoorsystems)

@trilinedoors
triline.net.au