

# PHOENIX™ CAVITY SLIDER (STANDARD)

The Triline Phoenix™ cavity slider is designed for doors up to 60kg in weight for residential and light commercial applications.



...an elegant, attractive,  
space-saving solution

2019

PRODUCT INFORMATION

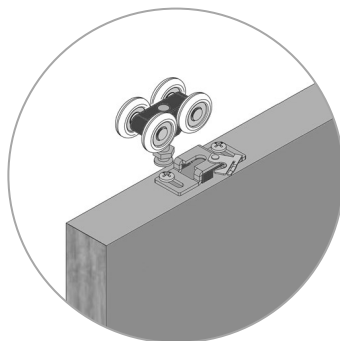
# In Detail

As with all Triline cavity sliders, the Phoenix™ range has been designed with robustness and strength being key features to ensure your project is complimented with a reliable, quality product.

The 'double J' track design keeps the wheels fully engaged at all times. This ensures that the door will never jump off the track as a single rail system might. This feature and the new and improved hanger design, combined to make a cavity slider that will provide years of quiet, smooth operation. The Phoenix™ hanger features 4 wheels with precision bearings, a cast nylon body for strength, and quick release fittings for ease of installation and adjustment.



One piece aluminium head track



4-wheel quick release hangers



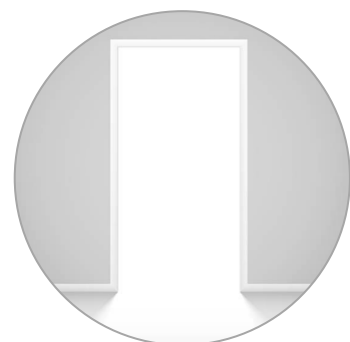
32mm slim look pelmet



Components cut to length for quick and easy install



Precision roller bearings tested to 100,000 cycles



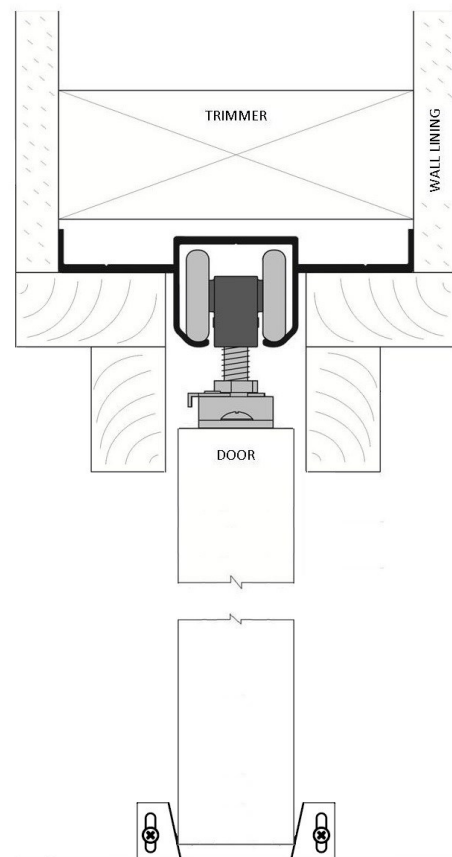
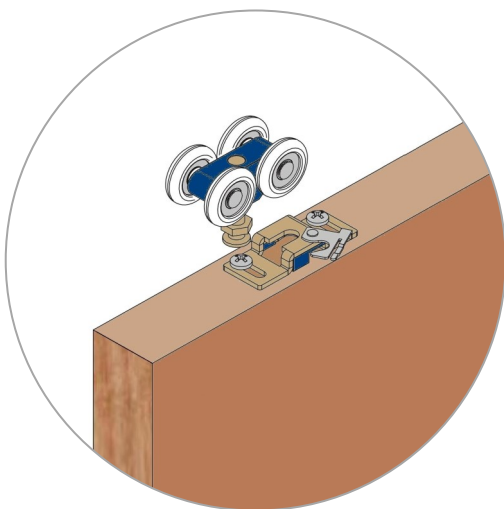
Max Door Height: 2340mm  
Max Door Width: 1020mm

N.B. Max door height and width may vary depending on the weight of the door.



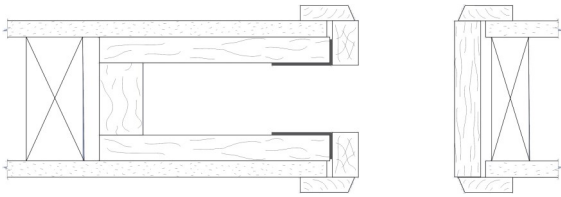
The Phoenix™ cavity system is suitable for single doors sliding to one side or double doors sliding either side on a single track.

The Phoenix™ cavity slider has simple height adjustment, and once the removable pelmet has been unscrewed and removed, simply wind the hanger bolt up or down to suit. There is no locking nut due to the design of the nylon body holding the bolt in place.



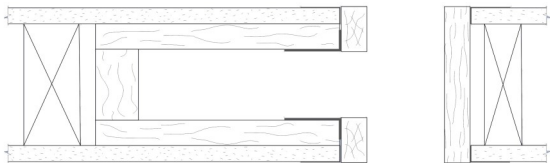
# Trim Options

## ARCHITRAVES



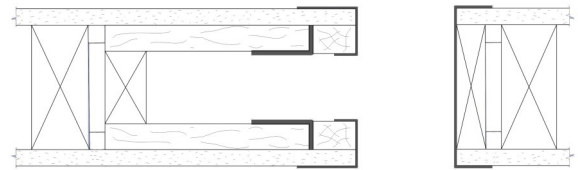
This is our standard setup for our cavity units. Split jambs, heads and closing jamb are all made to be fitted with architraves (supplied by others). Architrave height also matches standard swing door architrave height to create a seamless look when side by side.

## P25 STOPPING ANGLE



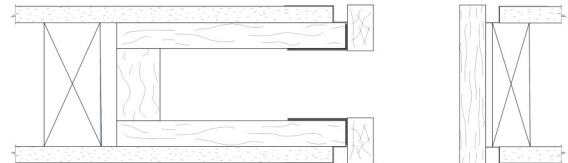
The jambs are all made 3mm wider to sit flush with the P25 angle once this has been trowelled in and painted to ensure a clean finish to the doorway. The P25 angle isn't supplied with the cavity sliding door unit.

## EZYJAMB cavkit



Manufactured from high-performance steel, the metal frames trim and cap the plaster edges around the door penetration. The cavity jambs are made smaller than standard for ease of wrapping over plasterboard. Triline can supply the EzyJamb flush finish system to suit your cavity slider to streamline your installation process.

## P50 SHADOW LINE



Also requires the jambs to be made slightly wider to align with the metal P50 shadow line angle. This unique shadow line adds another whole dimension to the aesthetics of your doorway. P50 angle isn't supplied with the cavity sliding door unit.

## OPENING PREPARATION

**OPENING WIDTH** (stud to stud)

**Single Door:** 2 x door width + 60mm

**Double Door:** 4 x door width + 60mm

**OPENING HEIGHT** (floor to trimmer)

**Height:** door height + 75mm

Frames are designed to fit onto the floor surface (i.e. concrete/timber) before floor coverings.

**CLEARANCES:**

**Between track & door:** 13mm +/- 3mm

**Below door:** 18mm +/- 3mm

