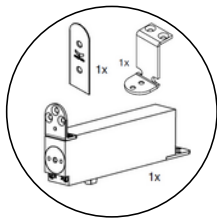


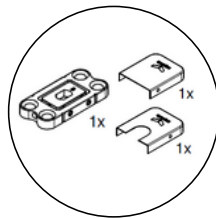
INSTALLATION INSTRUCTIONS

# Pivotica PRO 100 FM F90

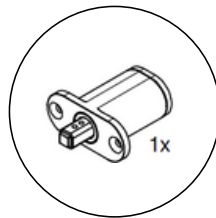
## COMPONENTS



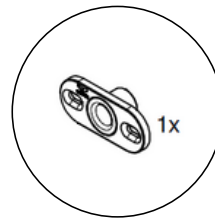
BOTTOM  
PIVOT



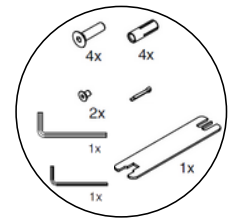
FLOOR  
PLATE



TOP PIVOT



CEILING/JAMB  
PLATE

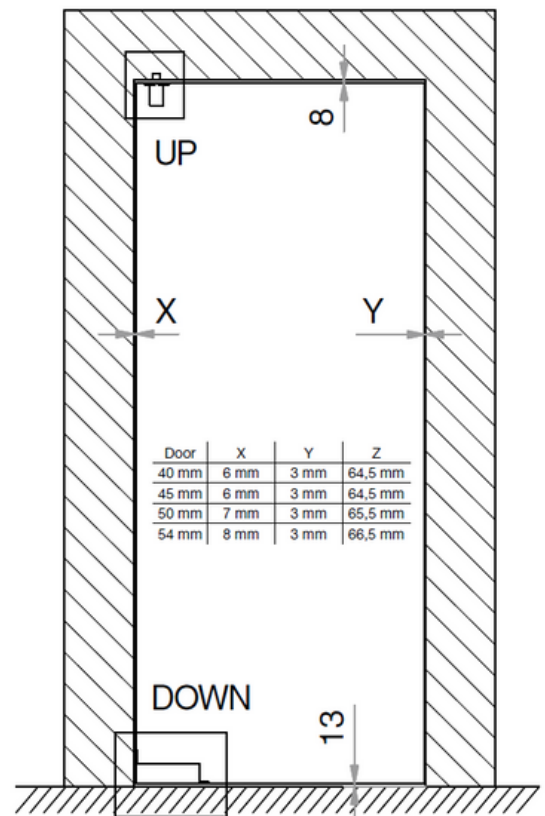


SCREWS

The Pivotica Pro 100 pivot hinge system offers versatile installation options to suit various design and functional needs. This advanced pivot hinge allows you to mount it in three distinct ways: with the bottom pivot hinge aligned at the bottom corner of the door for a traditional look, in a de-centralized position where no hardware is visible from the door edges for a sleek, minimal aesthetic, or centrally mounted on the door panel for a balanced and contemporary style. Follow the instructions below for proper installation and to achieve your desired configuration.

Note: the screws supplied are suitable for use in wooden doors. If a different surface is being used, you will have to obtain the appropriate screws and plugs yourself.

The screws supplied are to be used to affix the top and bottom pivot system to the door leaf. Screws to attach the ceiling and floor plate have not been provided. You will have to obtain suitable screws and plugs (depending on the surface to be used) yourself.



# INSTRUCTIONS

The ceiling plate, top pivot system, bottom pivot system and floor plate must be aligned vertically as precisely as possible.  
 The floor plate must be perfectly aligned with the wall / door leaf.  
 The parts must be placed in the centre of the door leaf.

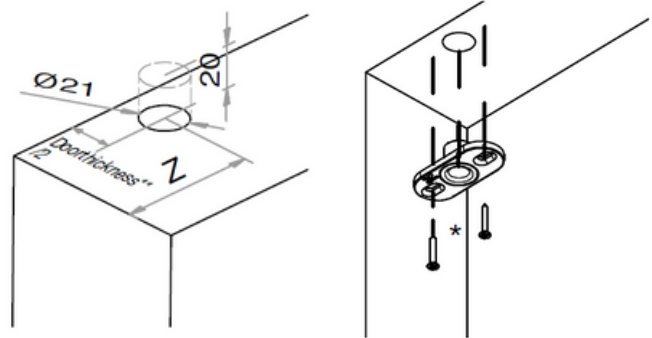
Min-Max Door Thickness: 40mm-100mm  
 Max Door Width: 2000mm  
 Min-Max Door Weight: 40-100kg  
 Min-Max Tolerance Between Top of the Door and Ceiling: 3-8mm  
 Tolerance Between Bottom of the Door and Floor: 13mm

Door	X	Y	Z
40 mm	6 mm	3 mm	93 mm
44 mm	5 mm	3 mm	93 mm
50 mm	6 mm	3 mm	94 mm
54 mm	6 mm	3 mm	94 mm

## 1. ASSEMBLY OF CEILING PLATE

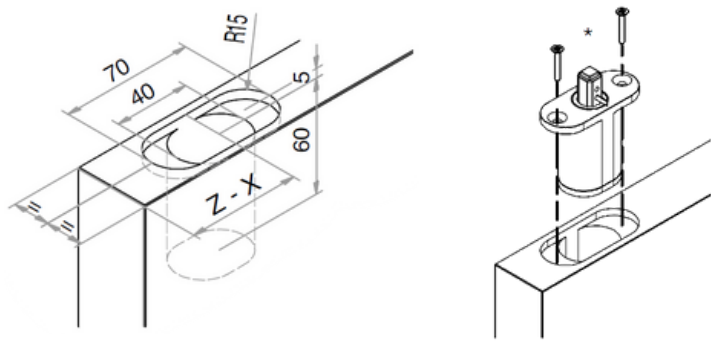
Drill a  $\varnothing 21$ mm hole 20mm deep into the ceiling.  
 Screw the ceiling plate in with the appropriate screws and plugs (depending on the surface).

\*Screws not included.



## 2. ASSEMBLY OF TOP PIVOT SYSTEM

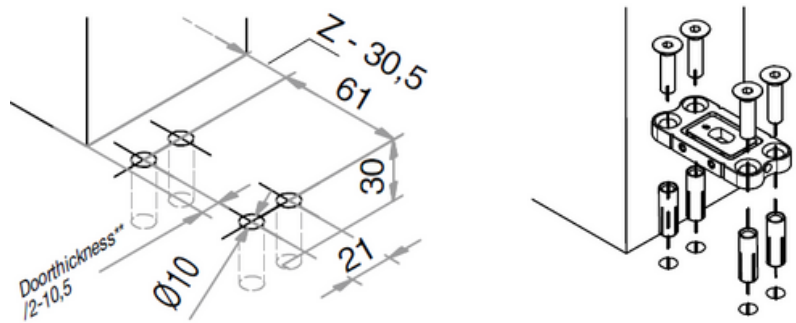
Cut the door leaf as shown in the diagram.  
 Place the top pivot system in the door leaf and screw it firm with the screws supplied.



## 3. ASSEMBLY OF FLOOR PLATE

Screw the floor plate in with the appropriate screws and plugs (depending on the surface).

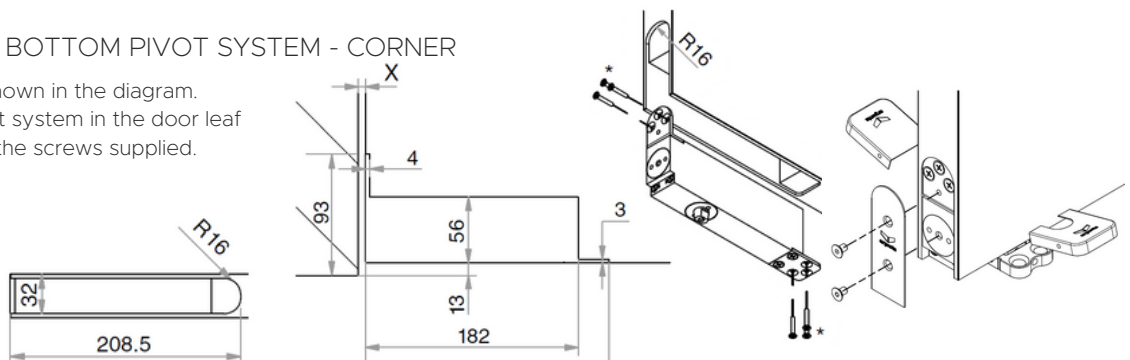
This plate can also be built in to the floor to further the concealed look.



## 4. ASSEMBLY OF BOTTOM PIVOT SYSTEM - CORNER

Cut the door leaf as shown in the diagram.  
 Place the bottom pivot system in the door leaf and screw it firm with the screws supplied.

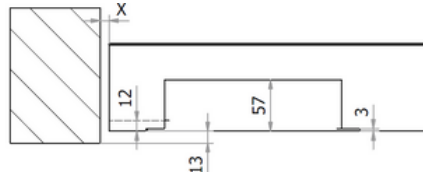
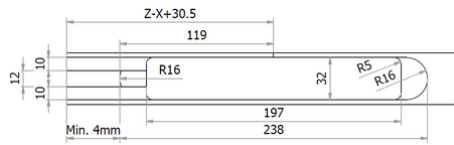
\*Screws not included.



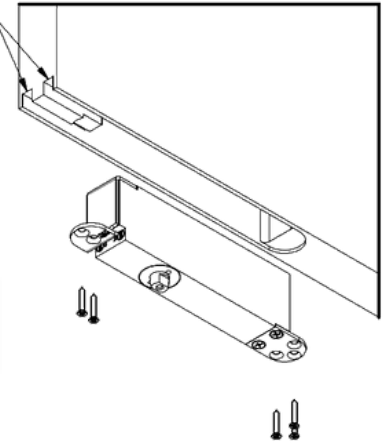
## 5. ASSEMBLY OF BOTTOM PIVOT SYSTEM - CENTRE OR OFF-CENTRE

Cut the door leaf as shown in the diagram.  
Place the bottom pivot system in the door leaf and screw it firm with the screws supplied.

\*Screws not included.



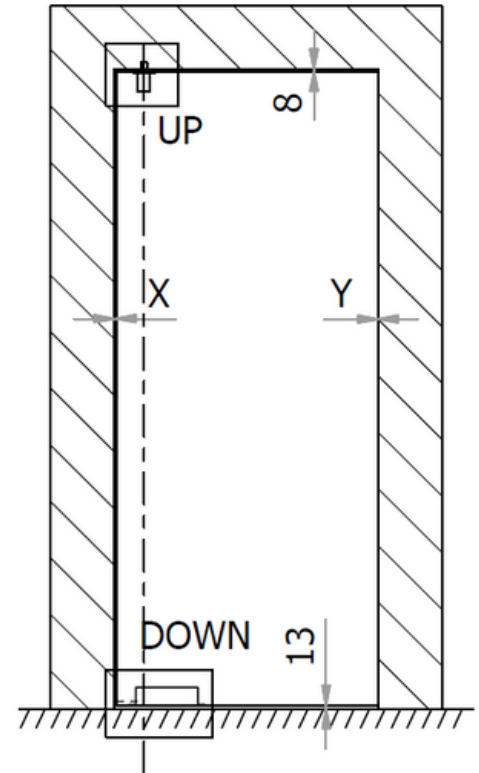
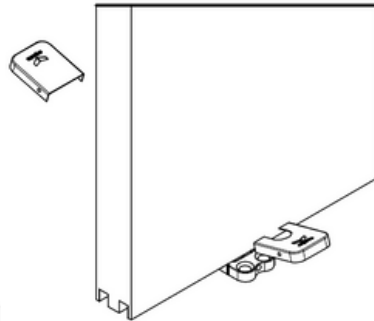
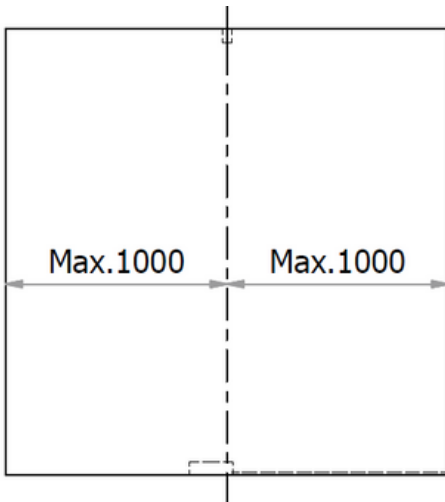
Grooves to set hinge



## 6. CENTRAL POSITION

Gaps when using the minimal axis-distance:

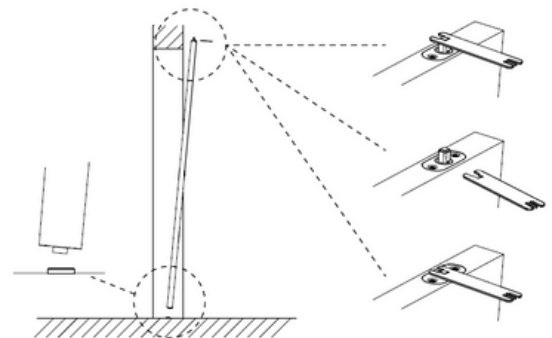
Door	X	Y	Z
40 mm	6 mm	3 mm	93 mm
44 mm	5 mm	3 mm	93 mm
50 mm	6 mm	3 mm	94 mm
54 mm	6 mm	3 mm	94 mm



## 7. INSTALL THE DOOR

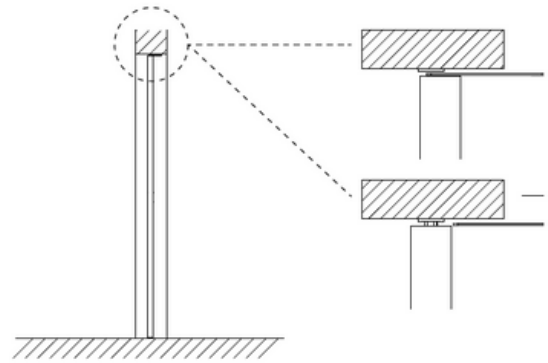
Place the axis of the bottom pivot system in the floor plate.

Use the wrench to push the axis of the top pivot system downwards.



## 8. SET DOOR IN PLACE

Place the door vertically and allow the axis of the top pivot system to shoot into the ceiling plate by removing the wrench.



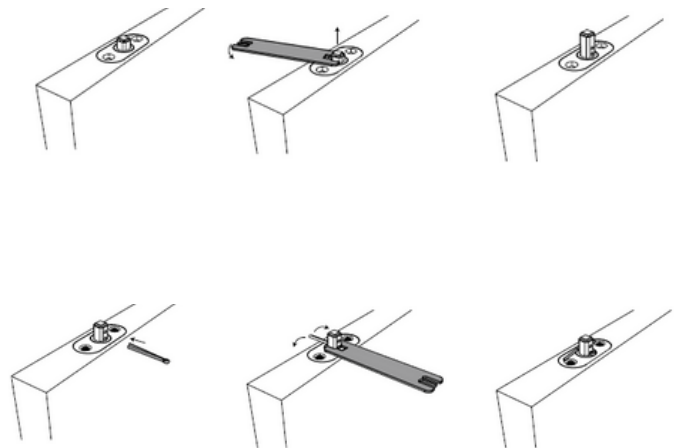
## 9. ADJUSTING THE UPPER AXIS

To ensure easy installation, the upper axis extends 10mm above the top pivot system. Note: that is not enough to ensure safe operation; before being put into use, the axis must be placed higher.

For the minimum tolerance of 6mm between the top of the door panel and the ceiling, the axis must be screwed upwards with the help of the wrench so that the first hole in the axis is visible.

For the maximum tolerance of 10 mm between the top of the door panel and the ceiling, the axis must be screwed upwards with the help of the wrench so that the second hole in the axis is visible.

Check the operation of the system and the tension on the door by opening and closing it several times. Adjust the tension of the system if necessary. Place the splint pin in the hole (the first hole for a tolerance of 6 mm, the second hole for a tolerance of 10mm). Place the wrench around the axis to block it and fold the splint pin with the help of a flat long-nose pliers.



## 9. ADJUSTING THE SPRING TENSION

The standard tension is set for a door of approx. 30kg. If the door is heavier than that, it will be closely with more difficulty or not completely unless the tension is adjusted. Lighter doors will close too fast and too hard unless the tension is adjusted.

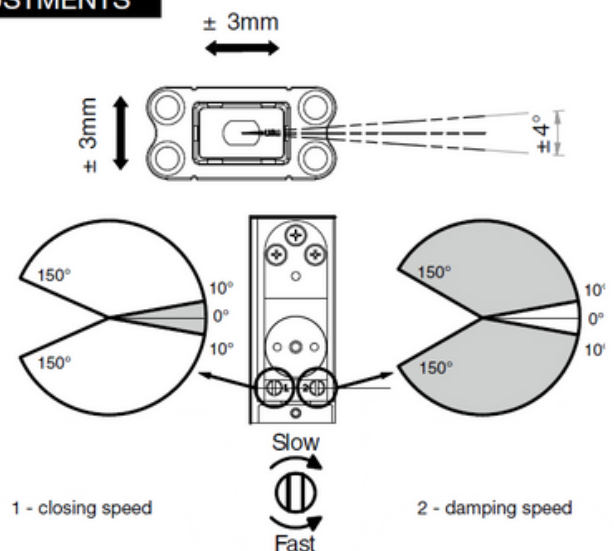
Turn to the right (clockwise) to increase the tension in the spring (for heavy doors) or to the left (counter-clockwise) to reduce the tension (for light doors).

The tension can be adjusted before the bottom pivot system is placed in the door panel or afterwards. If the tension is to be adjusted after assembly, the door will have to be disassembled first.

## DISASSEMBLY

Turn the axis in the top pivot system completely downwards using the special wrench provided. Remove the door from the floor plate. Before replacing the door, the axis in the top pivot system must be turned upwards approximately 1cm.

### ADJUSTMENTS



Product improvement is a continuous process & specifications are subject to change without notice.

© COPYRIGHT 2024 E&OE