

ZERO CLEARANCE™ CAVITY SLIDER

Floor to ceiling cavity sliding doors are becoming increasingly popular in residential homes, commercial offices and retail fit-outs creating flexible offices and living spaces.



where style and
function meet

2019

PRODUCT INFORMATION

In Detail

The striking appearance achieved with floor to ceiling doors presents its own unique challenges when it comes to sliding door hardware. Modern minimalist—clean lines demand unobtrusive hardware that is concealed from view.

The Triline Zero Clearance™ range has been designed to achieve clearances of 3-5mm between the track & top of the door. With no hanger plates or screws protruding above the top edge of the door, the door can be adjusted to achieve a minimal Zero Clearance™ look.

Available for full height doors, or to suit standard height doors as single units, or to suit double doors sliding one either side on a single track.



Raised rail track profile
& anodised aluminium
for a smooth ride



Stainless steel roller
bearings tested to
100,000 cycles



3-5mm gap from top of door
to track for a clean-lined
architectural look. Pelmet free.



Full height or standard
height units.



Add our soft close damp-
er to ensure a quiet and
soft stop every time.



Max Door Height: 3000mm

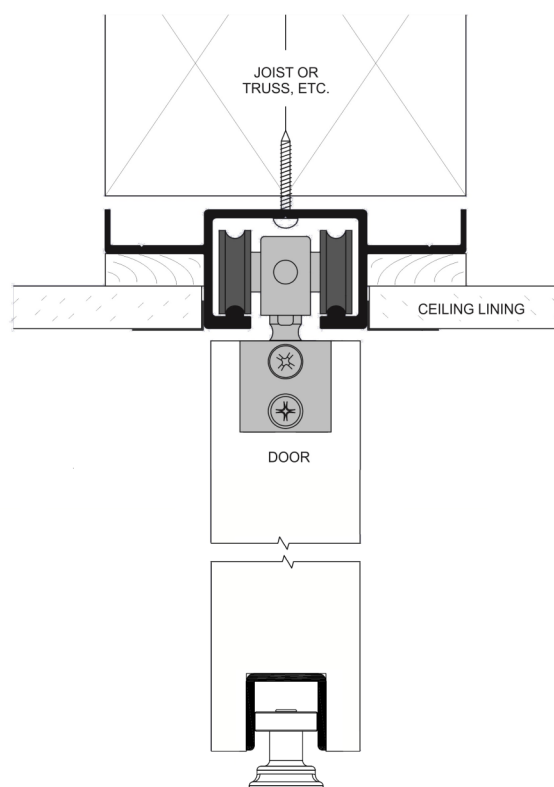
Max Door Width: 3000mm

N.B. Max door height and width may vary
depending on the weight of the door.



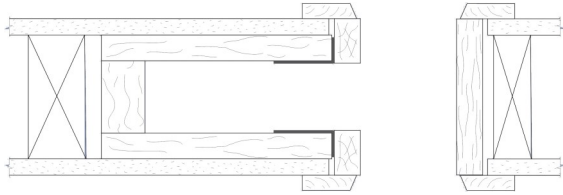
In addition to the minimalist hanger fittings, the Triline Zero Clearance™ range comes with a precision bearing bottom roller guide system as standard, fully concealed in the bottom edge of the door, extending the Zero Clearance™ look to the floor.

To compliment the Zero Clearance™ range, Triline can also offer various options for doors to suit providing a complete package. Doors can be rebated for hardware if required, saving time during installation.



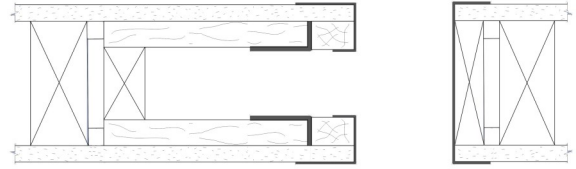
Trim Options

ARCHITRAVES



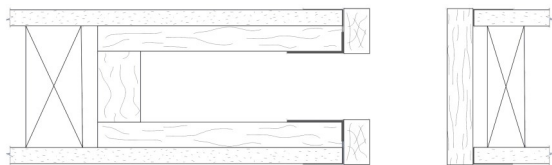
This is our standard setup for our cavity units. Split jambs, heads and closing jamb are all made to be fitted with architraves (supplied by others). Architrave height also matches standard swing door architrave height to create a seamless look when side by side.

EZYJAMB cavkit



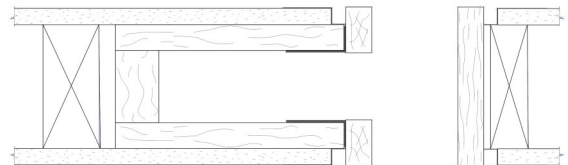
Manufactured from high-performance steel, the metal frames trim and cap the plaster edges around the door penetration. The cavity jambs are made smaller than standard for ease of wrapping over plasterboard. Triline can supply the EzyJamb flush finish system to suit your cavity slider to streamline your installation process.

P25 STOPPING ANGLE



The jambs are all made 3mm wider to sit flush with the P25 angle once this has been trowelled in and painted to ensure a clean finish to the doorway. The P25 angle isn't supplied with the cavity sliding door unit.

P50 SHADOW LINE



Also requires the jambs to be made slightly wider to align with the metal P50 shadow line angle. This unique shadow line adds another whole dimension to the aesthetics of your doorway. P50 angle isn't supplied with the cavity sliding door unit.

OPENING PREPARATION

OPENING WIDTH (stud to stud)

Single Door: $2 \times \text{door width} + 60\text{mm}$

Double Door: $4 \times \text{door width} + 60\text{mm}$

OPENING HEIGHT (floor to trimmer)

Height: $\text{door height} + 55\text{mm} + \text{Floor Covering Thickness (i.e. 20mm)}$

Frames are designed to fit onto the floor surface (i.e. concrete/timber) before floor coverings.

CLEARANCES:

Between track & door: $5\text{mm} \pm 1\text{mm}$

Below door: $10\text{mm} \pm 1\text{mm}$

