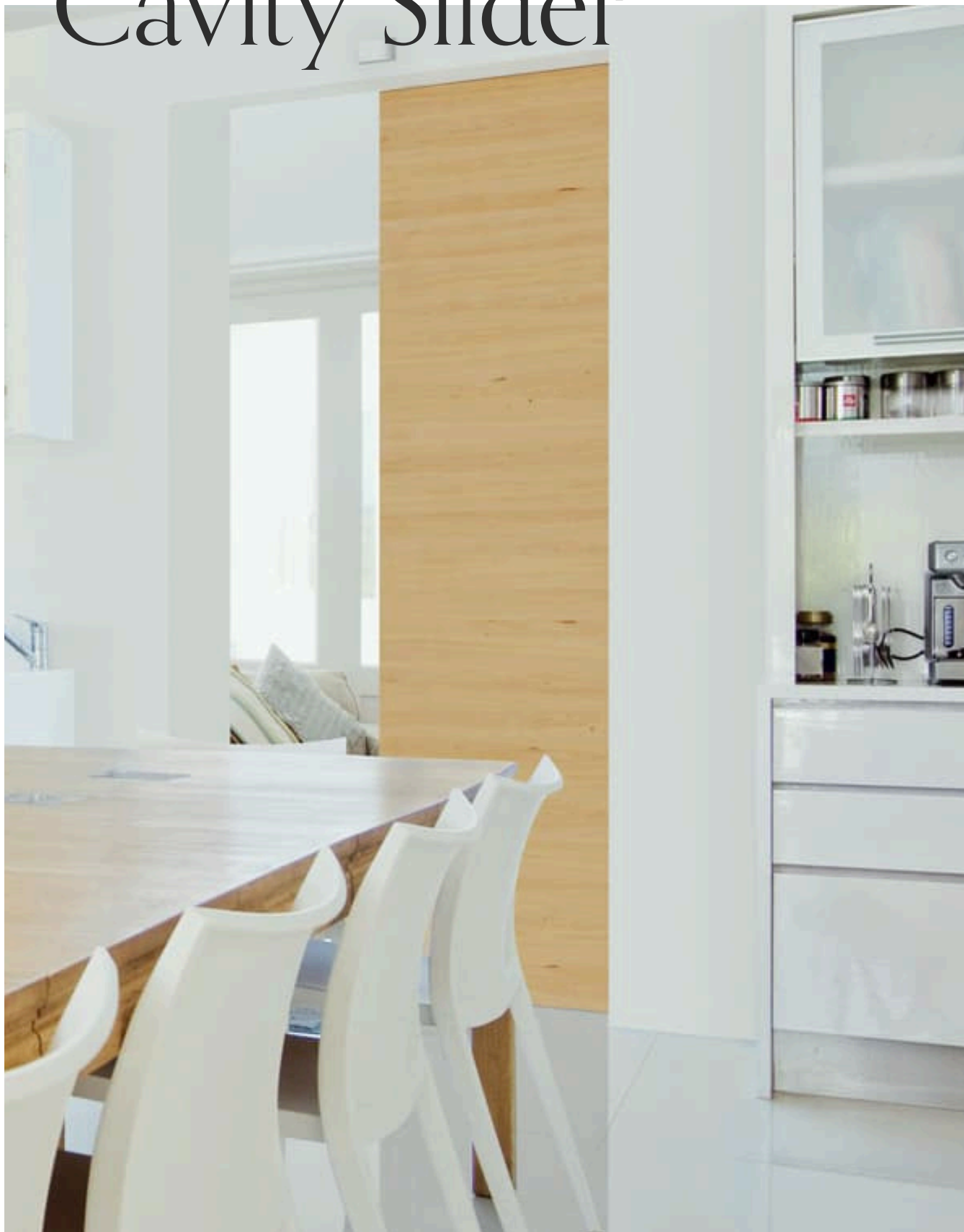


# Auto 80 Cavity Slider

TRILINE AUTOMATIC SLIDING DOOR SYSTEMS



TRILINE 2025

1300 239 206  
sales@triline.net.au

[linkedin.com/company/triline](https://linkedin.com/company/triline)  
[facebook.com/trilinequalitydoorsystems](https://facebook.com/trilinequalitydoorsystems)

@trilinedoors  
triline.net.au





# Index

## OVERVIEW

4-6

Introduction

7-9

Specifications

10-11

Options

12-13

Elevations & Preparation

14-15

Project Feature

# Enhance convenience. Maximize space. Redefine luxury with automatic pocket doors.

## **Effortless motion, seamless design.**

Doors are more than just entry points; they guide movement, define spaces, and enhance functionality. Automatic sliding doors take this a step further, offering a seamless transition between rooms with touchless convenience. Unlike traditional swing doors, they disappear into the wall, optimizing space while maintaining an elegant, minimalist aesthetic. Triline's Auto Cavity Slider, featuring Dorma CS 80 MAGNEO technology, ensures a whisper-quiet, safe, and accessible experience—perfect for modern interiors where both style and efficiency matter.



# What are auto sliding doors?

The Triline Automatic Cavity Sliding Door System is a premium, space-saving solution that combines Triline's cavity slider design with the CS 80 MAGNEO magnetic operator. This advanced system allows for smooth, touch-free door operation with various activation options, including motion sensors, push buttons, and remote controls. Designed for both residential and commercial spaces, it provides accessibility, quiet operation, and a sleek, integrated look without the need for wall access hatches.



# Why automatic sliding doors?

An automatic sliding door offers seamless, hands-free access, enhancing convenience, safety, and accessibility for all users.

---

## SEAMLESS, SPACE-SAVING DESIGN

Eliminates the need for traditional swing doors, maximizing usable space while maintaining a clean, modern aesthetic.

---

## TOUCHLESS ACCESSIBILITY & SAFETY

Features SoftMotion technology, stopping and reversing on light contact, making it ideal for high-traffic areas and accessibility compliance.

---

## EASY INSTALLATION & MAINTENANCE

No wall access hatch required, and the system is designed for quick setup without specialist knowledge.

---

## ULTRA-QUIET & VERSATILE

Perfect for noise-sensitive environments like offices, clinics, and luxury homes, with multiple activation options for tailored convenience.

---

IN DETAIL

# Triline Auto Sliding Systems

This system offers a sleek, visually appealing design that seamlessly integrates into homes, clinics, and workplaces—unlike bulky commercial automatic doors. With minimal sensors and discreet activation options, it maintains a clean, modern aesthetic while delivering effortless functionality.

Featuring the “SoftMotion” safety feature, the door stops and reverses on light contact in Low Energy Mode, ensuring safe and smooth operation. Designed to suit both glass and wooden doors, it is a stylish and practical solution for private homes, medical practices, offices, hotels, and the hospitality industry.

## FEATURES



### Advanced Technology

Magnetic linear motor ensures smooth and reliable operation



### Multiple Activations

Push&Go, push button, radar motion detector, radio remote control, and auto switch



### SoftMotion Safety

Stops and reverses on light contact



### Installation

Designed for quick and easy installation with minimal commissioning

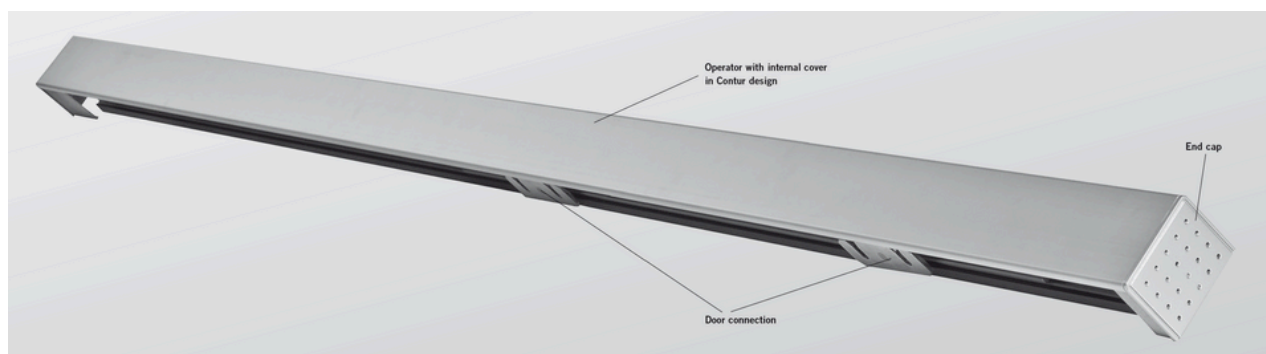


### Compliance

Meets Australian standards AS. 1428-2009 for accessibility for disabled persons

TRILINE AUTO 80

# Specifications



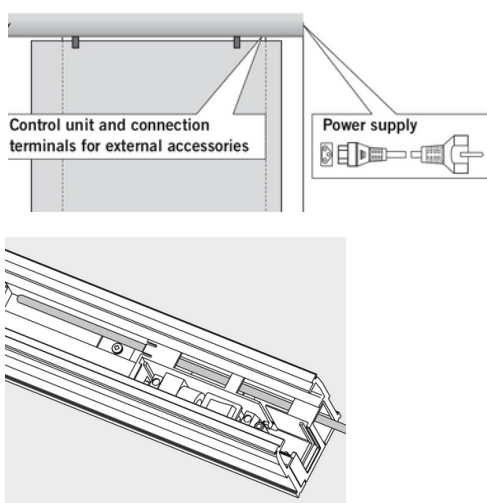
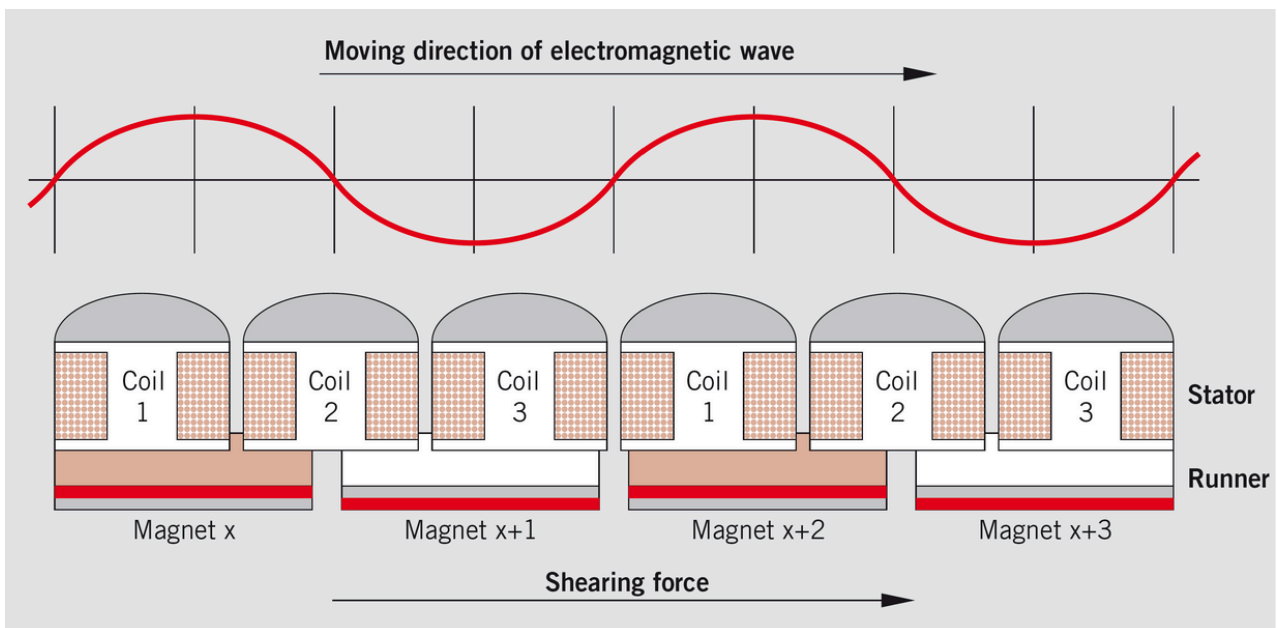
Max Door Weight	80kg
Access Hatch Required	No
Works in Power Failure	Yes, can be opened manually
Max Door Height	3000mm
Max Door Width	1125mm
Clearance Above Door	11mm
Clearance Below Door	10mm
Suitable for Full Height Doors	Yes
Commissioning	Yes, this will be conducted by Triline contractors, cost of this service is included.

\*\*Note: max door height & width may vary depending on the weight of the door.



# Specifications

This automatic sliding door operator offers smooth, quiet, and reliable operation with exceptional convenience. Using solenoid technology, it suits all single-panel interior doors while maintaining a sleek, modern design. Its magnetic, contactless linear DC motor ensures effortless and seamless movement, making it ideal for everyday use.



- The unit comes with a 2.5m long 3-pin cloverleaf cable (similar to a laptop cable). To connect it via a GPO in the ceiling space, drill a 25mm hole through the top of the closing jamb and the wall framing leading to the ceiling space.
- The cables for external accessories (sensors, pushbuttons etc.) have to be laid inside the cable channel as indicated in diagram left.
- Optional electric lock for Privacy and Security available (please specify at time of ordering)

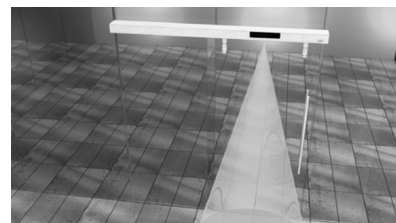
# Activation Options

---

## MOTION DETECTOR

A motion detector is suitable to open the CS 80 MAGNEO in a full-automatic way.

The system is delivered in Low-Energy-Mode as standard so that the door will stop and reverse automatically on the slightest contact.



## PUSH & GO

The door opens as soon as the door is slightly pushed in opening direction by hand and closes automatically on expiry of the individually adjustable hold-open time.

In the event of a power failure, it may be effortlessly opened and closed manually.

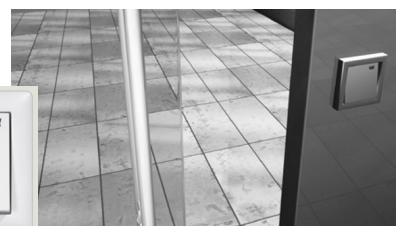


## PUSH BUTTON OR MAGIC SWITCH

The CS 80 MAGNEO can be activated via pushbutton.

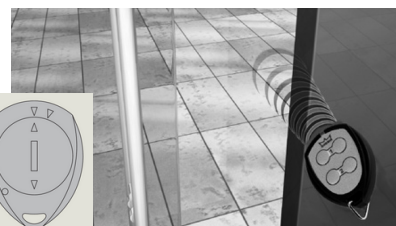
The Magic Switch is a non-contact option triggered by a simple hand movement in front of the sensor.

The sliding door will close automatically as soon as the user has passed through the door way.



## RADIO REMOTE CONTROL

A CS 80 MAGNEO operator with a BRC radio remote system may be opened and closed with the aid of a BRC-H radio remote control.



## PROGRAM SWITCH

You may comfortably switch between the different operation modes (Automatic, Permanent Open and manual operation) with the aid of the internal program switch or the wall-mounted EPS-S3 program switch.

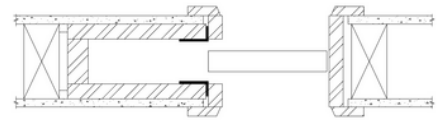


# Trim Options

---

## ARCHITRAVES

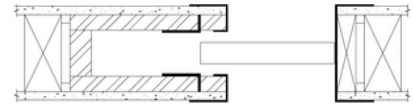
This is our standard setup for our cavity units. Split jambs, heads and closing jamb are all made to be fitted with architraves (supplied by others). Architrave height also matches standard swing door architrave height to create a seamless look when side by side.



---

## EZYJAMB CAVKIT

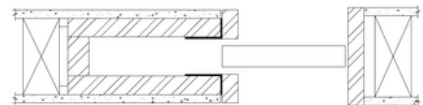
Manufactured from high-performance steel, the metal frames trim and cap the plaster edges around the door penetration. The cavity jambs are made smaller than standard for ease of wrapping over plasterboard. Triline can supply our purpose made EzyJamb flush finish system to suit your cavity slider to streamline your installation process.



---

## P25 STOPPING ANGLE

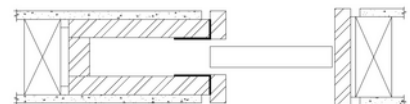
The jambs are all made 3mm wider to sit flush with the P25 angle (supplied by others) once this has been troweled in and painted to ensure a clean square stop finish to the door jamb.



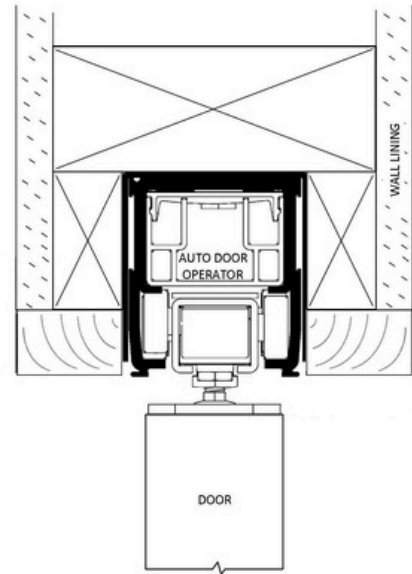
---

## P50 SHADOW LINE

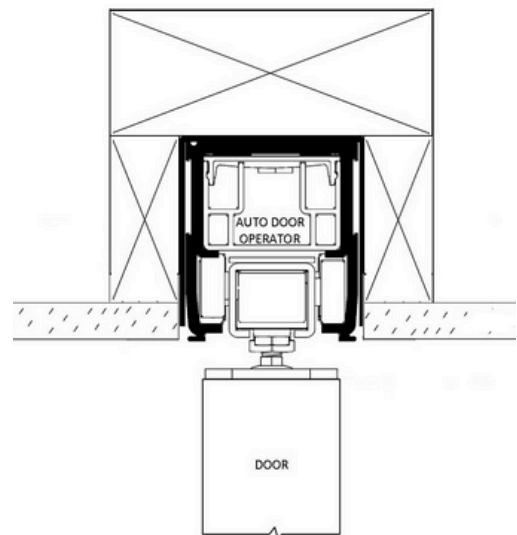
Also requires the jambs to be made slightly wider to align with the metal P50 shadow line angle (supplied by others). This unique shadow line adds another whole dimension to the aesthetics of your doorway.



# Elevations



AUTO 80  
LESS THAN FULL HEIGHT (WALL ABOVE)



AUTO 80  
FULL HEIGHT (FLOOR TO CEILING)

# Frame Opening & Preparation

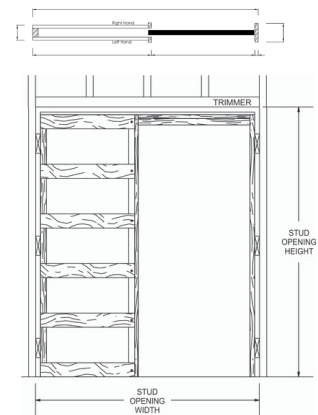
Frames are designed to sit on to the floor surface  
(i.e. concrete/timber) before floor coverings.

## DOOR CLEARANCES

Between track & door: 11mm  
Below door: 10mm

## SINGLE DOOR OPENING

**Opening Width (Stud to Stud):**  $2 \times \text{door width} + 60\text{mm} - \text{Door Projection}$   
**Opening Height (Floor to Trimmer):**  $\text{door height} + 123\text{mm} + \text{Floor Covering}$



## PRE-INSTALLATION CONSIDERATIONS

A 240v twin GPO is required to be installed by others in ceiling space above sliding door closing jamb. If there is a requirement for continued automated operation during a power failure the operator can be fitted with an Uninterrupted Power Supply (UPS), which should be specified by a security consultant.

Appropriate access to the ceiling space is required for easy access to the power supply and UPS for maintenance.

It is the Builder's responsibility to arrange for chasing of walls and/or conduits for cabling or pull wires to connect Activation Devices to operator. Cables and wires must be installed in the wall before wall lining is installed as necessary.







Effortless access with a  
seamless auto sliding solution





triline.  
net.au

Head Office/Factory  
86 Sunderland Street  
Derwent Park TAS 7009

©Triline 2025

Sunshine Coast Factory  
4 Railway Court  
Glanmire QLD 4570

1300 239 206  
sales@triline.net.au

[linkedin.com/company/triline](https://www.linkedin.com/company/triline)  
[facebook.com/trilinequalitydoorsystems](https://www.facebook.com/trilinequalitydoorsystems)

@trilinedoors  
triline.net.au